

# Eastlands Primary School



September 2020 Bulletin 2

## Hello to all our families.

Thank you to parents who are following school guidance around the site. Morning drop off is working very well and school starts promptly. As a result of this we have adjusted the drop off and collection times for Nursey, Reception, Year 1 & 2.



Thank you to children who are working very hard to remember the changes in school.

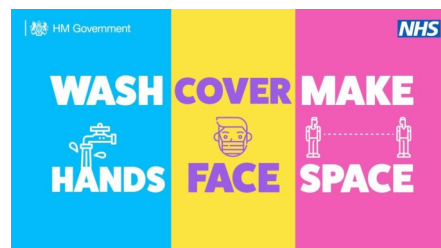
⇒ Important changes to drop off and collection times

		Start of day	End of day
Change	Nursery	8.45 drop off at Nursery door and use path by school offices to exit	3.30 collection
Change	Reception	8.55 drop off at Reception Door	3.15 collection
Change	Year 1	8.55 drop off at Year 1 door	3.15 collection
Change	Year 2	8.55 drop off at Year 2 door	3.15 collection
No changes	Year 3,4,5,6	8.45 - walk in independently along Lansdown Place to their classroom door	3.20 - Year 3 & 4 collected from play-ground Year 5 & 6 staff to walk children to school gates or children o walk home independently.

⇒ Please use HSCB for messages to limit face to face contact.

⇒ If you do need to raise an issue with your class teacher on site please stand to one side and wait until other children have been dismissed.

Thank you for your support as we continue to adapt our procedures in increase pupils time in school.



**We all have the right to feel safe all the time.**

Eastlands Primary School Protective Behaviours Curriculum

# Eastlands Primary School

## Coronavirus symptoms and what to do if you think you have them.

\* Please would you keep school informed if you test positive for COVID or suspect a family member is showing COVID symptoms.

\* Public Health England have asked us to remind you that if someone in your household is showing COVID symptoms everyone in the household should self isolate until you have been tested.



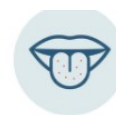
HIGH TEMPERATURE



NEW PERSISTENT COUGH



LOSS OF SMELL



LOSS OF TASTE

The government have, as of Monday 14th September, taken the this measure...

### Rules and guidance on meeting up

**How many people outdoors?**



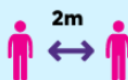
Up to six people from different households from Monday 14 September

**How many people indoors?**



Up to six people from different households from Monday 14 September

**At what distance?**



Stay 2 metres apart from people you do not live with where possible

Our school community is made of pupils, staff ,parents. The wider community includes the families we all go home to.

Thank you to everyone who is working so hard to follow government guidance on social distancing.

Rugby schools meet with NIHP ( formerly Public Health England ) weekly to get information the local situation. Rugby has an increasing number of cases but we are not at the point of Leicester or Bolton in terms of needing additional measures.

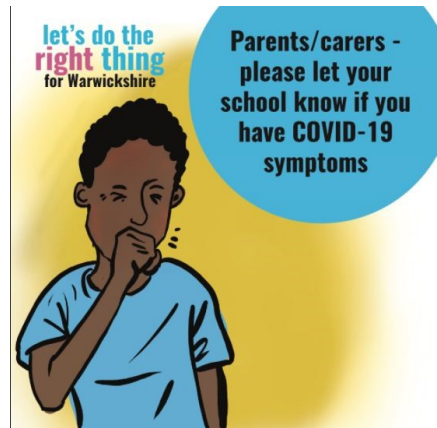
**We all have the right to feel safe all the time.**

Eastlands Primary School Protective Behaviours Curriculum

# Eastlands Primary School

## Updates/Queries

1. Please keep the school informed of suspected or positive cases to help us manage safety in school.
2. Site visitors—we are now booking in essential appointments with Speech & Language specialist, Educational Psychologist and builders who need to conduct some essential maintenance tasks to the school building. Hotshots will not be on site in the foreseeable future.
3. Some of our parents remain concerned about social distancing at class doorways and at the gate. Please use face coverings on site. Staff are using visors at the gates.
4. Staff members and parents/carers must be ready and willing to:
  - ♦ **Book a test** if they are displaying symptoms.
  - ♦ Provide details of anyone they have been in close contact with if they were to test positive for coronavirus (COVID-19) or if asked by NHS Test and Trace
  - ♦ **Self-isolate** if they have been in close contact with someone who develops coronavirus (COVID-19) symptoms or someone who tests positive for coronavirus (COVID-19)
  - ♦ Inform the school immediately of the results of a test
6. Later in the autumn term we are planning to organise teacher parent meetings in which will be held through video conferencing or over the phone.



**Let's commit to kindness and helping each other during the Covid-19 outbreak**

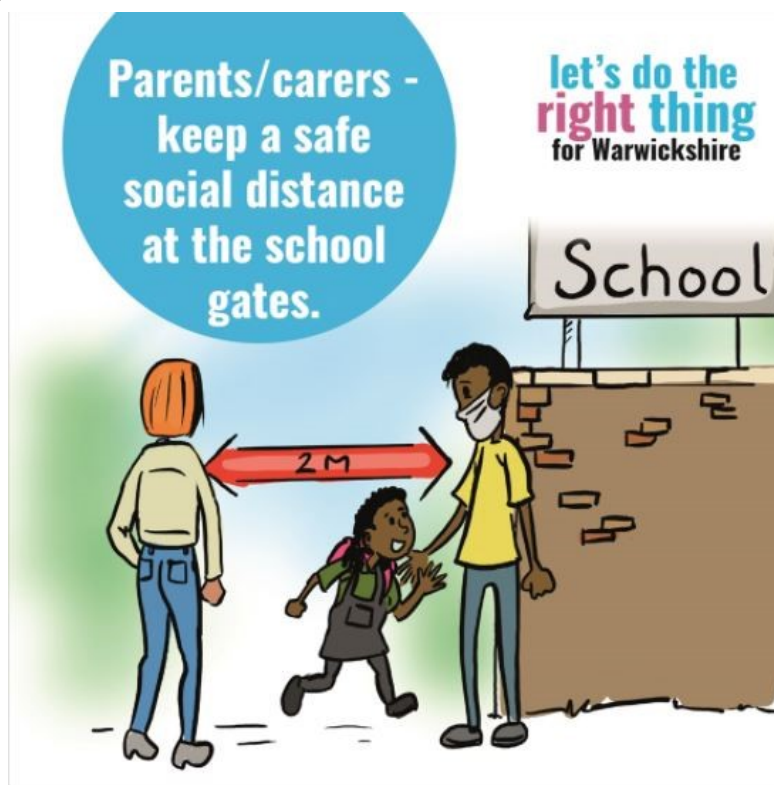
Remember to be kind to each other by:-

- ♦ **Supporting others**—friends, families, neighbours, co-workers who might be at risk, isolating, vulnerable or lacking information
- ♦ **Being socially responsible**—showing kindness and compassion in all interactions
- ♦ **Saying thank you**—to those who are taking action to keep us well and safe.

It is hard to appreciate the situation we are all dealing with personally at such challenging times.

**We all have the right to feel safe all the time.**


# Eastlands Primary School



**We all have the right to feel safe all the time.**

# Eastlands Primary School

## School Absences Relating to Coronavirus – Quick Reference Guide:

What to do if :		Return to school when...
<b>My child has coronavirus symptoms:</b>	<ul style="list-style-type: none"> <li>• <b>Do not come to school</b></li> <li>• Contact school</li> <li>• Self-isolate and get a test</li> <li>• Inform school of test result when received</li> </ul>	...test comes back negative
<b>My child tests positive for coronavirus:</b>	<ul style="list-style-type: none"> <li>• <b>Do not come to school</b></li> <li>• Inform School</li> <li>• Self-isolate for at least 10 days</li> </ul>	<p>...after isolation period and they feel better.</p> <p>They can return to school after 10 days even if they have a cough or loss of taste/smell, as these symptoms can linger for several weeks after infection is gone.</p>
<b>Somebody in household has coronavirus symptoms:</b>	<ul style="list-style-type: none"> <li>• <b>Do not come to school</b></li> <li>• Contact school</li> <li>• Self-isolate</li> <li>• Household member to get a test</li> <li>• Inform school of test result when received</li> </ul>	...the household member's test is negative
<b>Somebody in my household has tested positive for coronavirus:</b>	<ul style="list-style-type: none"> <li>• <b>Do not come to school</b></li> <li>• Contact school</li> <li>• Self-isolate for at least 14 days</li> </ul>	...the child has completed 14 days of self-isolation and has no symptoms
<b>NHS Test and Trace have identified my child as a 'close contact' of somebody with symptoms or confirmed coronavirus:</b>	<ul style="list-style-type: none"> <li>• <b>Do not come to school</b></li> <li>• Contact school</li> <li>• Self-isolate for 14 days</li> </ul>	...the child has completed 14 days of self-isolation and has no symptoms
<b>Sibling in another class or school has been told to isolate due to a positive case of Covid-19 in their class/ bubble:</b>	<ul style="list-style-type: none"> <li>• <b>Come to school</b> – as they are not themselves a close contact of the positive case</li> </ul> <p>If sibling develops symptoms then follow <i>'Somebody in household has coronavirus symptoms'</i></p>	-
<b>We/ my child travelled and have to quarantine on return:</b>	<ul style="list-style-type: none"> <li>• Do not take unauthorised leave in term time</li> <li>• Consider quarantine requirements and government advice when booking travel. Provide information to school as per attendance policy</li> </ul> <p>If quarantine is required:</p> <ul style="list-style-type: none"> <li>• <b>Do not come to school</b></li> <li>• Contact school</li> <li>• Self-isolate for the instructed quarantine period</li> </ul>	...the quarantine period has been completed

**We all have the right to feel safe all the time.**