

Eastlands Primary School

June 2019

EPS Attendance

Target **96.5%**

Attendance in May:

R— 95.3%

Y1— 97.5%

Y2—96.5%

Y3—97.2%

Y4— 96.3%

Y5—95.4%

Y6— 95.9%

Overall attendance for the whole school for May was averaging at 96.3%.

This is below our target.

Please help us to raise this % by ensuring your child attendance is good or better.

Is your child's class

“On time at 5 to 9” ?

School opens at **8.45am** when children can go to their classrooms and get ready for the start of the school day. Please make sure that your child is in their class, ready to work by **8.55am** at the latest.

Year 6 end of term dates.

7th–10th June—Year 6 residential -Skern

27th June—Year 6 transition day

16th July 9.15 —Year 6 Leavers assembly (**Please note change of date**)

17th July Year 6 Leavers Ball (6.00)

Term dates. -

10th June —Year 1 & 2 Phonics screening tests begin

17th June—Sports /Health week

20th June—Sports day

28th June - PSA summer fayre

Termly Learning Conferences

1st July (N, R, Year 1, 2, 3)

4th July (Year 4R, 4E,5,6)

12th July—Reports to parents

15th July.-Celebration assembly

19th July - School closes.

Autumn term begins 4th September

Happy Birthday to all our children who celebrate their birthdays in June

Rec: Cara, Reece, Matei

1: Micah, Izabela, Jasmin

2: Julia, Elliott, Harriett, Zac, Tanish

3: Freya, Astrid

4: Demi, Joy, Aariz, Imogen, Eden

5: Mason, Ethan, Sophie

6: Jasper, Rehan, Rafi, Erin

Daily Mile The Daily Mile is a simple but groundbreaking initiative, encouraging primary schools and nurseries to take children outside running for 15 minutes each day. The aim of The Daily Mile is to improve the physical, emotional, social health and wellbeing of children in the United Kingdom and around the world – regardless of age or personal circumstances, to create healthy habits for life.



The school council explored the idea of 'Daily Mile' with their class mates

91% of our pupils said they would like this to happen in our school.

It was trialled in the last school week of May and will continue as part of our school well being programme.

Safeguarding is Everybody's Responsibility

Eastlands Primary School

Lansdowne Place, Rugby CV21 3RY Tel: 01788 57328

Eastlands Primary School

Dear Parents,

We are fast approaching the end of this academic year. Many thanks to all our parents for your support over the year. Children and staff have worked very hard and Year 6 are now looking forward to their residential at Skern. I hope they have a great time.

Staffing

At Eastlands we have an excellent dedicated staff team. I would like to thank all the teachers, teaching assistants, admin team, lunchtime staff, caretaking & cleaning team, before and after school staff and kitchen staff for their commitment to Eastlands and our pupils this year.

I would, in particular, like to thank Miss Sherriff who worked in Early Years for nearly 2 years and Miss Andrews who has worked as a midday supervisor for several years.

A warm welcome to Mrs Durley who has joined us as a new midday supervisor. We have advertised again for lunchtime supervisors and before and after school vacancies. As you can imagine these hours are less desirable to people thus making these posts hard to recruit but we will continue with our endeavours.

Health & safety

During the course of the school year we have practised our emergency procedures. These have included:-

- ⇒ Fire practices (evacuation from the school building onto the playground)
- ⇒ 'Invacuation' (from the school playground into the school building) and
- ⇒ Lock down procedure to respond to a local area emergency e.g. toxic smoke from a local factory.

Rehearsing emergency procedures means we are better prepared to respond in an emergency

Used books

If you have books that your children have outgrown could you send them into school. All books should be in good condition please.

They will be added to our AR collection to increase choice.

We all have the right to feel safe all the time.

Eastlands Primary School Protective Behaviours Curriculum

Eastlands Primary School

Reducing teacher workload

Updated 20 March 2019

Article from the governing body

As governors our priority, when supporting Mrs Edwards with the running of the school, is to make sure we get the best outcomes for all pupils, whatever they may be. That is a shared value across all the governors. For that to happen there are lots of pieces that come together but fundamental to that is for us to have happy teachers who are given the time to teach our children. Reducing teacher workload is something we are striving to do and is a current focus nationally. Future Ofsted will be looking specifically at this significant factor.

The Department for Education in April stated reducing teacher workload was a key part of their strategy to retain more teachers within the profession, it is the leading reason teachers quit altogether. I'm sure you understand that teachers work a tremendous number of hours outside of the classroom but few people truly understand quite how much time they do spend working at home in the evenings and at weekends. We're very thankful to our great teachers and staff!

We are trying to support Mrs Edwards as she looks at ways to reduce teacher workload. We're all keen to ensure teachers are happy in their work and spending as much time as possible doing tasks that will have a direct benefit for your children and are supporting Mrs Edwards as she looks to take this forward.

For additional reading please see:-

<https://www.gov.uk/government/publications/reducing-teachers-workload/reducing-teachers-workload>

We all have the right to feel safe all the time.

Eastlands Primary School Protective Behaviours Curriculum

Eastlands Primary School

Value of the Month-Creativity

Creativity-Noun

The use of imagination or original ideas, especially in the creation of an artistic work

CREATIVITY



Look at how creative we have been across our school!



Year 4's clay pots and Reception's spider web creations



Nursery's symmetrical butterflies and Year 2's spectacular jungle



Year One's poetry and Year Six's Monet-inspired art



What a lot of imagination and creativity we have!



We all have the right to feel safe all the time.

Eastlands Primary School Protective Behaviours Curriculum

Eastlands Primary School

School Dinners

We employ 'Educaterers' to cook our school meals. This team will be attending the Nursery and Reception new intake evenings to show the high quality meals we provide in school. Our school meals are very good value at just £2.30

Online safety reminder—Children under 13 should not have Facebook accounts. We will speak to parents if we are aware of primary age children having this or any other account they are too young for. We may speak to the social media site directly.

Any social networking site has potential for good and bad – it's the privacy settings and behaviour of the individual which are more important.

Parents need to monitor all social media and more importantly talk to their children about safe use.

**internet
matters.org**

learn about it
talk about it
deal with it

Internet Matters covers a wide range of topics for parents including safe internet settings.

There as a video here which promote safe use and highlight how children can keep themselves safe when they are interacting.

Community

School uniform can be purchased from:

Webb Ellis shop (St Mathews Street, Rugby) <http://www.webb-ellis.co.uk/>
and

My Clothing : www.myclothing.com

Eastlands Has Got Talent - auditions in June

The children need to practice their talent and let their teacher they would like to enter. Other children will be watching them perform in the hall.

Thank You!

To Joel's dad (Year 1 parent) for all his help with the work on the pond and fish.

We all have the right to feel safe all the time.

Eastlands Primary School Protective Behaviours Curriculum

Warwickshire School Health and Wellbeing Service

Your school nurse led service is friendly, confidential and free for all school aged children (aged 5 – 19 years*) and their families. We can offer you and your child support on a wide range of health related issues such as:



Child Development

e.g. bedwetting, sleep, diet

Relationships

Physical Health

Healthy Eating & Lifestyle Choices

Emotional & Mental Health

Bullying

Managing Medicines

Childhood Immunisations

Smoking

Alcohol & Drugs

Sexual Health

If your child has a learning need, disability or long term health condition (e.g. epilepsy, asthma, diabetes, allergies) we can help you get the right care and support.

Friendly

Helpful

Safe

*up to 25 years for young people with special educational needs or disabilities.

For more information about this service please contact the team on:

03300 245 204 or

warwickshireSH&WBSservice@compass-uk.org

Compass



Eastlands Primary School

School Closure in Emergency —We If we have an emergency school closure or part day closure you will be informed through Rugby FM, our school website, on www.warwickshire.gov.uk/schoolclosure and by text message as soon as possible.

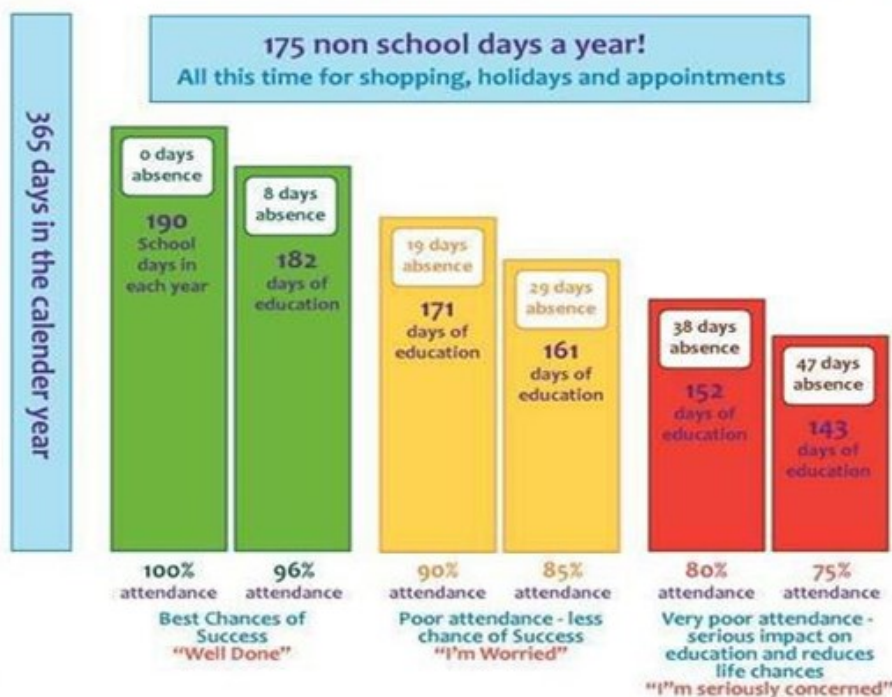
ATTENDANCE TARGET

Our school attendance target is:-

96.5%

Good Attendance Means...

being in school at least 96% of the time. This means 8 Days Off!



Computer Fun

This month's recommended website for children:-

[KS1](#) – Nursery Rhymes

<http://www.bbc.co.uk/learning/schoolradio/subjects/earlylearning/nurserysongs>



Always supervise your children when they are using the internet

Ks2 - [Topmarks - English](#)

EverySchool.co.uk - English-key-stage-2



Safeguarding is Everybody's Responsibility

Eastlands Primary School

LEAVE OF ABSENCE DURING TERM TIME UPDATED INFORMATION FOR PARENTS

The Supreme Court recently reached a decision in the case of *Platt v Isle of Wight Council* which has clarified the law on unauthorised leave, including holidays, during term time. The parents of children of compulsory school age are required to ensure that they attend school on a regular basis. The Supreme Court has made clear that attending school 'regularly' means that the children must attend school on every day that they are required to do so. As such, the parents of any child who is absent from school without authorisation for any length of time are likely to be considered as committing an offence under s444 of the Education Act 1996.

Head Teachers retain the ability to authorise leave in accordance with the Education (Pupil Registration) (England) Regulations 2006. When considering such requests for a leave of absence, the school are obliged to act within the law. Head Teachers may not grant any leave of absence during term time unless there are exceptional circumstances relating to the application. If the leave is granted, head teachers are able to determine the number of school days a child can be absent for.

It is for the Head Teacher to decide what is 'exceptional' and it is at their discretion if the circumstances warrant the leave to be granted. The school can only consider Leave of Absence requests which are made by the 'resident' parent.

Each application for a leave of absence will be considered on a case by case basis and on its own merits.

Where applications for leave of absence are made in advance and refused, the child will be required to be in school on the dates set out in the application. If the child is absent during that period, it will be recorded as an unauthorised absence, which may result in legal action being taken against the parent(s), by way of a Fixed Penalty Notice.

Failure to make an application for leave in advance can also result in a Fixed Penalty Notice being issued to the parent(s).

All matters of unauthorised absence relating to a Leave of Absence will be referred to the Warwickshire Attendance Service, part of Warwickshire County Council.

It is important to note, Fixed Penalty Notices are issued to each parent of each absent child, (for example 2 children and 2 parents, means each parent will receive 2 invoices in the amount of £120 each, totalling £240 for both children, this is reduced to £60 per child if paid within 21 days).

Where a Fixed Penalty Notice is not paid within the required timeframe as set out on the notice, the matter will be referred to Warwickshire County Council's Legal Services to consider instigating criminal proceedings under S444 Education Act 1996.

Fixed Penalty Notices are issued in accordance with Warwickshire County Council's Code of Conduct for Penalty Notices.

Your child's progress academically as well as socially is our shared priority

Warwickshire Primary School pupils recorded 29,703 half day sessions of absence due to holiday in the Autumn/Spring term during the academic year 2017/18. This is an increase of 6,256 on the previous year.