

Eastlands Primary School

May 2019

EPS Attendance

Target **96.5%**

Attendance in April:

R— 97.1%

Y1— 96.5%

Y2—95.8%

Y3—97.7%

Y4— 95.6%

Y5—94.4%

Y6— 96.3%

Overall attendance for the whole school for April was averaging at 96.2%.

This is below our target.

Please help us to raise this % by ensuring your child attendance is good or better.

Is your child's class

"On time at 5 to 9" ?

School opens at **8.45am** when children can go to their classrooms and get ready for the start of the school day. Please make sure that your child is in their class, ready to work by **8.55am** at the latest.

To improve fitness in our school the School Councillors surveyed their school friends about the Daily Mile.

91% of the school agreed this would help us to get fitter. Children will begin this later this month



For support materials

Term dates. 6th May—Bank Holiday

13th May—Year 6 SATs week

20th May—Year 2 SATs week

23rd May—Prospective parents evening

27th May—Half Term Week

7th June—Year 6 to Skern

1st July (N, R, Year 1, 2, 3)

4th July (Year 4R, 4E,5,6) Termly Learning Conferences

28th June - PSA summer fayre

17th June—Sports /Health week

20th June—Sports day

Happy Birthday to all our children who celebrate their birthdays in May

Rec: Ruby

1: Gracie

2: Samuel

3: Sienna, Daniel

4: Tharosh, Oliver, Omsiri, Leah

5: Ezme, Sienna, Roalds-Marsels

6: Rocco, Krisha, Daniils, Harry



Punctuality facts.

Please can I ask that parents do not make routine appointments during school hours.

Thank you for your continued co-operation.

Why is punctuality so important?

Good school attendance includes being there on time. Punctuality is a life skill. The habit of good punctuality at school will help your child throughout their education, into adult life and the work place.

Did you know that...

5 minutes late each day
= **3 days** lost over a year

10 minutes late each day
= **6.5 days** lost over a year

15 minutes late each day
= **10 days** lost over a year

20 minutes late each day
= **13 days** lost over a year

30 minutes late each day
= **19 days** lost over a year

Safeguarding is Everybody's Responsibility

Eastlands Primary School

Lansdowne Place, Rugby CV21 3RY Tel: 01788 57328

Eastlands Primary School

Parent views 2018

Last year you gave us some feedback on HSCB. I have tried to source HSCB that are bound more strongly. I will also talk to senior leadership team of the purpose of a year calendar being added as this was also a suggestion.

Warwickshire School Health & Wellbeing Service



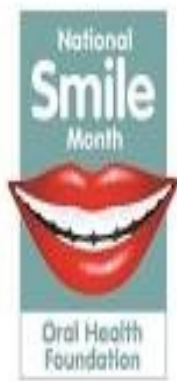
Warwickshire School Health & Wellbeing Service and Warwickshire Young Persons Substance Misuse Service has launched a new way for parents and carers of school aged children to get confidential advice and support about child health related issues.

ChatHealth is an award-winning school nurse messaging service and is available Monday to Friday from 9am to 5pm. There will be automatic bounce-back responses to incoming messages out of hours. Answering the text message will be a nurse who can assist with any queries about general health, child development, behaviour, toileting and emotional health and wellbeing issues.

The text number is 07520 619 376.

The opportunity to discuss any health issues relating to your child is always available and the School Health and Wellbeing Service can be contacted on 03300 245 204.

Oral health



According to Public Health England almost a quarter of 5 year olds have tooth decay with an average 3 or 4 teeth being affected. Prevention is always better than cure, therefore please encourage and supervise your child/ren to clean their teeth twice a day and ensure they visit the dentist for a check-up every 6 months even if there are no problems with their teeth. NHS dental care for children under 18 is free. Children should also limit sugary food intake as we know that sugar harms teeth. You can speak to your Dentist if you have any concerns about your child's oral health. The opportunity to discuss any health issues relating to your child is always available and the School Health and Wellbeing Service can be contacted on 03300 245 204 or confidentially text ChatHealth Parentline on 07520 619 376.

Eastlands Primary School



Thursday evenings at Eastlands Primary School 6—to 6.45pm

Tel 07853338732 Email p4tkd@sky.com

Instructor — Pat Carter

Community

Daffodils were purchased by the school for Carers Day.

PSA Fundraising.

Our next Bag2School collection date is **Weds 8th May**. Collection bags have been sent home, if you will be filling and returning your bag please bring it to school **on the 8th by 9am**.



For more information on the Bag2School scheme visit <http://uk.bag2school.com/> . Thank you.

School Twitter Feed

Our school Twitter account is used as a commentary on events and activities held in school. I hope you find it useful.

Please note Twitter is used for sharing information from school only.



Safeguarding is Everybody's Responsibility

Eastlands Primary School



Interested in being more involved in the way children and young people's mental health services are shaped in Warwickshire?

We are looking for parents/carers who would like to participate in the commissioning of services and dialogue between children's mental health commissioners and key stakeholders, and to make recommendations to the Strategic Partnership Board on service developments.

Please contact— andrewsjurseth@warwickshire.gov.uk

01926 742336

As soon as possible

Eastlands Primary School

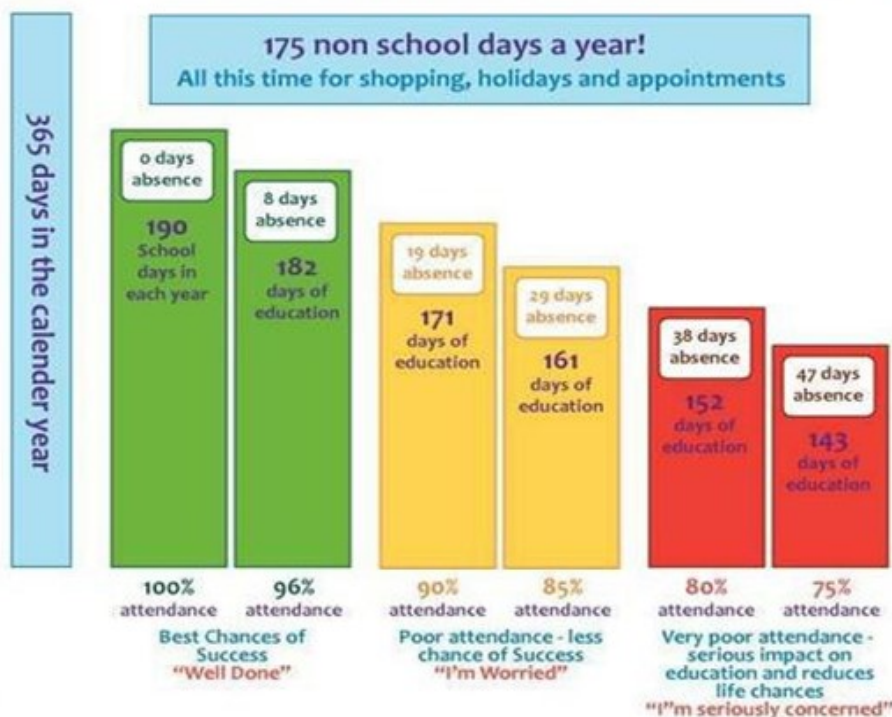
School Closure in Emergency —We If we have an emergency school closure or part day closure you will be informed through Rugby FM, our school website, on www.warwickshire.gov.uk/schoolclosure and by text message as soon as possible.

ATTENDANCE TARGET

Our school attendance target is:- **96.5%**

Good Attendance Means...

being in school at least 96% of the time. This means 8 Days Off!



Computer Fun

This month's recommended website for children:-



Ks1 [story time](http://storyteller.net)

Always supervise your children when they are using the internet



Storyteller.net

[Home](#) | [Articles](#) | [Amphitheater](#) | [Stories](#) | [Find Tellers](#) | [Get Listed](#)

Ks2 - [storyteller](http://storyteller.net)

Safeguarding is Everybody's Responsibility

Eastlands Primary School

LEAVE OF ABSENCE DURING TERM TIME UPDATED INFORMATION FOR PARENTS

The Supreme Court recently reached a decision in the case of *Platt v Isle of Wight Council* which has clarified the law on unauthorised leave, including holidays, during term time. The parents of children of compulsory school age are required to ensure that they attend school on a regular basis. The Supreme Court has made clear that attending school 'regularly' means that the children must attend school on every day that they are required to do so. As such, the parents of any child who is absent from school without authorisation for any length of time are likely to be considered as committing an offence under s444 of the Education Act 1996.

Head Teachers retain the ability to authorise leave in accordance with the Education (Pupil Registration) (England) Regulations 2006. When considering such requests for a leave of absence, the school are obliged to act within the law. Head Teachers may not grant any leave of absence during term time unless there are exceptional circumstances relating to the application. If the leave is granted, head teachers are able to determine the number of school days a child can be absent for.

It is for the Head Teacher to decide what is 'exceptional' and it is at their discretion if the circumstances warrant the leave to be granted. The school can only consider Leave of Absence requests which are made by the 'resident' parent.

Each application for a leave of absence will be considered on a case by case basis and on its own merits.

Where applications for leave of absence are made in advance and refused, the child will be required to be in school on the dates set out in the application. If the child is absent during that period, it will be recorded as an unauthorised absence, which may result in legal action being taken against the parent(s), by way of a Fixed Penalty Notice.

Failure to make an application for leave in advance can also result in a Fixed Penalty Notice being issued to the parent(s).

All matters of unauthorised absence relating to a Leave of Absence will be referred to the Warwickshire Attendance Service, part of Warwickshire County Council.

It is important to note, Fixed Penalty Notices are issued to each parent of each absent child, (for example 2 children and 2 parents, means each parent will receive 2 invoices in the amount of £120 each, totalling £240 for both children, this is reduced to £60 per child if paid within 21 days).

Where a Fixed Penalty Notice is not paid within the required timeframe as set out on the notice, the matter will be referred to Warwickshire County Council's Legal Services to consider instigating criminal proceedings under S444 Education Act 1996.

Fixed Penalty Notices are issued in accordance with Warwickshire County Council's Code of Conduct for Penalty Notices.

Your child's progress academically as well as socially is our shared priority

Warwickshire Primary School pupils recorded 29,703 half day sessions of absence due to holiday in the Autumn/Spring term during the academic year 2017/18. This is an increase of 6,256 on the previous year.