

Eastlands Primary School

January 2019

EPS Attendance

Target **96.5%**

R— 94.9%

Y1— 97.6%

Y2— 97.2%

Y3— 97.1%

Y4— 96.5%

Y5— 97.9%

Y6— 94.8%

Overall attendance for the whole school for **December** was averaging at **96.6%**.

This is meeting our target.

Please help us to raise this % further by ensuring your child attendance is good or better.

Is your child's class

"On time at 5 to 9" ?

School opens at **8.45am** when children can go to their classrooms and get ready for the start of the school day. Please make sure that your child is in their class, ready to work by **8.55am** at the latest.

Happy New Year to all our parents and children.

I hope you all had a restful break.

It was lovely to see all the children refreshed and ready for school.

2019

Term dates. -

11th February & 14th February—Termly Learning conferences

6th March—Class Photographs

Friday 12th April—school closes for Easter.

Monday 29th April - Summer term begins

Happy Birthday to all our children who celebrate their birthdays in January:

Year 1: Aariah

2: Thomas, Sofija, Princess

3: Lorenzo,

4: Alfie, Archie C, Jemima, Benjamin, Sebastian

5: Soren, Mabel, Amelia

6: Sophie, Arden, Catherine

EPS Communication

Our school communication systems are:-

1. Message through your child and in communication book.
2. Contact is your child's class teacher if necessary.
3. If you have further concerns you can always ask to speak to
 - ⇒ Mrs Goff who leads Early Years
 - ⇒ Miss Towers who leads Year 1 & 2.
 - ⇒ Mrs Warrington who is our Deputy Head Teacher.

Telephone messages: As members of staff are in classrooms 'phone messages will only be returned when possible.

Please note: When parents request a response, the most appropriate colleague will follow up.

Twitter – Be aware we use Twitter as a means of communication to share school messages. If you have any queries you will need to ask at the school admin office.

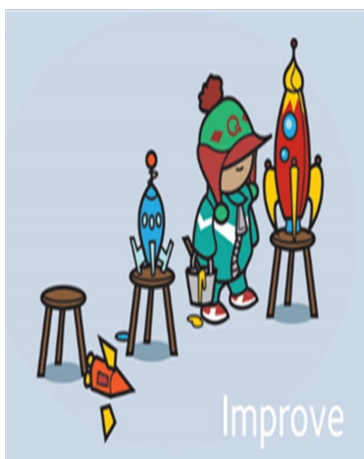
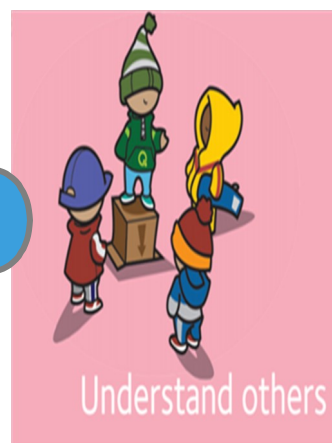
School website –This is updated regularly and may answer some of your questions. Please take a look.

Safeguarding is Everybody's Responsibility

Eastlands Primary School

Lansdowne Place, Rugby CV21 3RY Tel: 01788 57328

Eastlands Primary School



Safeguarding is Everybody's Responsibility

Eastlands Primary School

Lansdowne Place, Rugby CV21 3RY Tel: 01788 57328

Eastlands Primary School

Children—Eyesight

Children may not always know that they have a vision problem. It is therefore recommended that children have regular eye tests. These should be carried out at least once every two years, even if there are no problems with their eyesight. These tests can be done at a high street opticians and are free for all children under 16 years old (and those under 19 years old in full-time education). You can speak to your child's Optician if you have any concerns about your their vision.

The opportunity to discuss any health issues relating to your child is always available and the School Health and Wellbeing Service can be contacted on 03300 245 204.

Warwickshire School Health & Wellbeing Service Compass

Base: Valiant Office Suites, Lumonics House, Valley Drive, Rugby CV21 1TQ
Switchboard: 03300 245 204

Community

Christmas Jumper day was very successful. As a school we raised £176.11 which is fantastic considering what an expensive time of year December is. Thank you all for your generosity.



Admission Policy for Lawrence Sherriff School 2020-2021 entry can be viewed at www.lawrencesherriffschool.com under parents and students/key information /school policies

PSA

The PSA team continue to work hard on behalf of our school. As well as organising the Christmas Fayre they also sold refreshments at the Christmas performances. Many thanks to this dedicated team who work tirelessly to raise funds for our school.



Safeguarding is Everybody's Responsibility

Eastlands Primary School

Lansdowne Place, Rugby CV21 3RY Tel: 01788 57328

Eastlands Primary School

E-safety : I have added useful You Tube guidance on pages 5 & 6 which have been shared on our website for your information. WSCB Safeguarding Website

There is a Safeguarding Warwickshire website, a joint website for both Warwickshire Adults and Warwickshire Children Safeguarding Boards.

The website includes information for parents/carers, children and young people as well as for all professionals working with children and their families in Warwickshire.

The website address is: www.safeguardingwarwickshire.co.uk



We all have the right to feel safe all the time.

Eastlands Primary School Protective Behaviours Curriculum

Eastlands Primary School

Child safety on YouTube: parent factsheet

What is the problem?

You may have seen news reports about inappropriate children's videos on YouTube.

These are videos that, at first, appear to be for children, as they include cartoon characters such as Peppa Pig, or characters from Disney films such as Frozen. However, later on the videos become violent or disturbing. One, for example, shows Peppa Pig being tortured at the dentist.

The videos can appear in YouTube search results when children look for genuine children's videos.

YouTube says that such videos will be age-restricted *if they are reported by users*, so they cannot be viewed by anyone under 18.

This factsheet explains how you can protect your child when they are using YouTube apps or the website.

What safety options are there on YouTube Kids?

The YouTube Kids app **automatically filters out inappropriate content**. However, YouTube explains that "no algorithm is perfect" and "your child might find content you don't want him or her to watch".

To help protect your child in YouTube Kids, you can set parental controls and change settings: tap the 'Lock' icon in the bottom corner of any page, enter your custom passcode and click 'Settings'. Here you can:

- Turn the search function off, so your child can only see recommended, curated videos under each category on the home screen: toggle 'Search' to off.
- Set a timer to limit how much time your child spends on the app: select 'Timer' and use the slider bar or the plus and minus icons to set a time limit, then tap 'Start Timer'

You can also block videos or channels you don't want your child to watch:

- Tap the 3 dots ('more') at the top of the video, tap 'Block' and select 'Block this video' or 'Block this channel' to block the whole channel associated with the video
- Tap 'Block' again, then enter the numbers you see written on the screen, or your custom passcode

To report content to YouTube that you think is inappropriate, use the 'flagging function': tap the flag icon next to a video or comment and select your reason for flagging.

The app does have advertising, but YouTube says it restricts adverts that aren't child-friendly.

What safety options are there on YouTube?

Turn on 'restricted mode'

This hides videos that may contain inappropriate content. YouTube says that "no filter is 100% accurate, but it should help you avoid most inappropriate content". To do this:

- On the website: click on the icon in the top-right corner that represents your YouTube account; in the drop-down menu look for 'Restricted Mode'
- In the app: tap Settings, then 'Restricted Mode Filtering', and turn it on

Eastlands Primary School

Flag inappropriate videos

If you think a video or a comment on a video is inappropriate, you can use the 'flagging feature' to prompt YouTube staff to check it and decide whether to block or restrict it:

Tap or click the flag icon next to a video or comment and select the reason for flagging

Flagged content is constantly reviewed to check for any violation of YouTube's Community Guidelines.

[How else can I help ensure my child's safety online?](#)

The tips below will help you to set rules for your child about accessing videos on the internet and their online behaviour, and support them to understand the risks and what to do if something happens.

- ⇒ Try to have your child in the same room as you when they are using the internet, and discourage them from using headphones
- ⇒ Chat to your child about what online videos might not be suitable for them to watch and share
- ⇒ Regularly check the history of videos they have watched online for anything inappropriate, or create a playlist for them
- ⇒ Encourage your child to tell you if they see something they find worrying or nasty
- ⇒ If your child wants to share a video they have recorded, check they get permission from anyone who features in it before they upload it
- ⇒ Tell your child not to give out any personal information or anything that can identify them, such as a school uniform or street name
- ⇒ Regularly check comments made on your child's videos. Talk to your child about how they could receive nasty or negative comments from other people, and what they should do if this happens
- ⇒ If another YouTube user posts a video of your child or shares personal information without consent, you can ask for this content to be removed by using YouTube's privacy complaint process

[Where else can I go for support?](#)

Policies, safety and reporting, YouTube: https://support.google.com/youtube/topic/2676378?hl=en&ref_topic=6151248

Privacy complaint process, YouTube: <https://support.google.com/youtube/answer/142443>

YouTube Kids parental guide, YouTube: <https://support.google.com/youtubekids/#topic=6130504> The National Society for the Prevention of Cruelty to Children (NSPCC) has a range of resources for parents on internet safety: <https://www.nspcc.org.uk/preventing-abuse/keeping-children-safe/online-safety/>

[Sources for this factsheet](#)

This factsheet was produced by Safeguarding Training Centre from The Key, in collaboration with National Online Safety: www.thekeysupport.com/safeguarding and <https://nationalonlinesafety.com/>

YouTube to restrict 'disturbing' children's videos, if flagged, BBC News, 10 November 2017
<http://www.bbc.co.uk/news/technology-41942306>

Eastlands Primary School

Bad weather—We are now into the time of year when bad weather can impact on school. If we have an emergency school closure or part day closure you will be informed through Rugby FM, our school website, on www.warwickshire.gov.uk/schoolclosure and by text message as soon as possible.

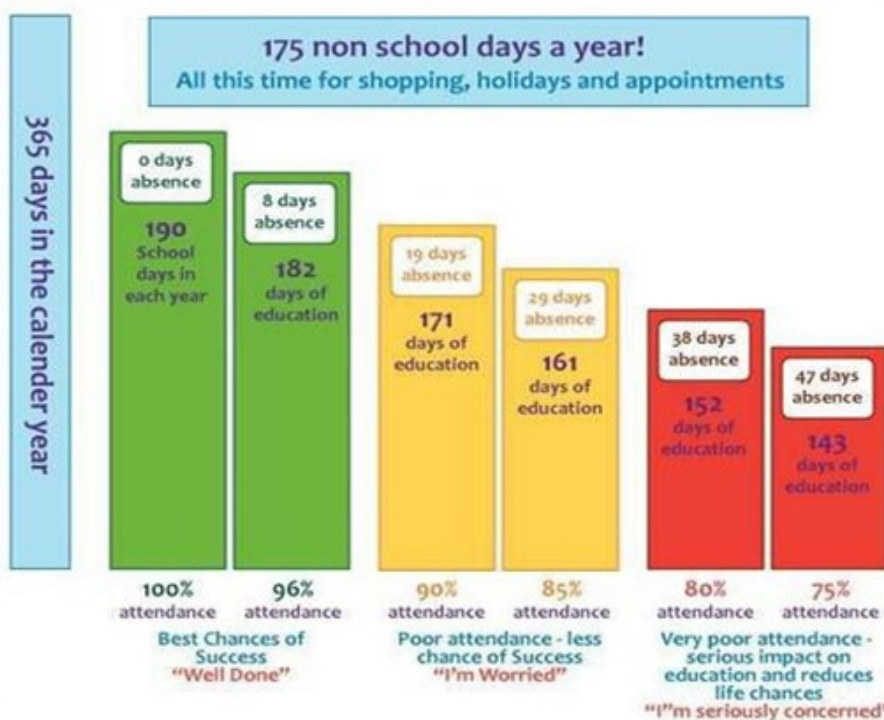
Our school attendance target is:-

96.5%

ATTENDANCE TARGET

Good Attendance Means...

being in school at least 96% of the time. This means 8 Days Off!



Computer Fun

This month's recommended website for children:-

KS1 [Story](http://www.storybee.co.uk)

[Bee](http://www.storybee.co.uk)

[http://](http://www.storybee.co.uk)



Always supervise your children when they are using the internet

KS2 – [Aaron Shepherd](http://www.aaron-shepherd.co.uk)

[http://](http://www.aaron-shepherd.co.uk)

Eastlands Primary School

LEAVE OF ABSENCE DURING TERM TIME 2016-2017 – INFORMATION FOR PARENTS

The Education (Pupil Registration) (England) (Amendment) Regulations 2013, govern all requests for leave within term-time. When considering such requests for a leave of absence, the school are obliged to act within the law.

The amended regulations removed references to 'holiday' and 'extended leave', as well as the statutory threshold of 10 school days. It is now clear that Head Teachers may not grant any leave of absence during term time unless there are exceptional circumstances relating to the application. If the leave is granted, head teachers are able to determine the number of school days a child can be absent for.

The Government has not defined 'exceptional circumstances' as referred to in the 2013 regulations. It is for the Head Teacher to decide what he/she views as 'exceptional' and it is at their discretion if the circumstances warrant the leave to be granted.

The school can only consider Leave of Absence requests which are made by the 'resident' parent.

Each application for a leave of absence will be considered on a case by case basis and on its own merits.

Where applications for leave of absence are made in advance and refused, the child will be required to be in school on the dates set out in the application. If the child is absent during that period, it will be recorded as an unauthorised absence, which may result in legal action being taken against the parent(s), by way of a Fixed Penalty Notice.

Failure to make an application for leave in advance can also result in a Fixed Penalty Notice being issued to the parent(s).

All matters of unauthorised absence relating to a Leave of Absence will be referred to the Attendance, Compliance and Enforcement Service of Warwickshire County Council

It is important to note, Fixed Penalty Notices are issued to each parent of each absent child, (for example 2 children and 2 parents, means each parent will receive 2 invoices in the amount of £120 each, totalling £240 for both children, this is reduced to £60 per child if paid within 21 days).

Where a Fixed Penalty Notice is not paid within the required timeframe as set out on the notice, the matter will be referred to Warwickshire County Council's Legal Services to consider instigating criminal proceedings under S444 Education Act 1996.

Fixed Penalty Notices are issued in accordance with Warwickshire County Council's Code of Conduct for Penalty Notices.

We greatly appreciate parental support to reduce the total amount of days lost due to holidays. We are committed to working in partnership with you to enable your child to reach their academic targets and to

Warwickshire Primary School pupils recorded 47,552 half day sessions of absence due to holiday in the academic year 2014/15. This is a decrease of 13,122 on the previous year. This is a positive outcome as it means that 6,561 extra days of education were achieved when compared with the previous academic year.

support their social development. For this to happen we need to keep individual attendance as high as possible - we all need to play our part.

Your child's progress academically as well as socially is our shared priority