

Eastlands Primary School

November 2018

EPS Attendance

Target **96.5%**

R— 96.2%

Y1— 98.2%

Y2—97.3%

Y3—97.6%

Y4— 97.7%

Y5—97.8%

Y6— 94.3%

Overall attendance for the whole school for October was averaging at **96.9%**.

This is reaching our target.

Please help us to raise this % by ensuring your child attendance is good or better.

Is your child's class

"On time at 5 to 9" ?

School opens at **8.45am** when children can go to their classrooms and get ready for the start of the school day. Please make sure that your child is in their class, ready to work by **8.55am** at the latest.

Dear Parents,

The first half term has flown by. I am really pleased to see how well children, new to our school, have settled in. Please see below for some important dates for the coming half term.

Term dates.

12.11.18—Anti—bullying week
30.11.18—PSA Christmas fayre
3.12.—5.12. 18—Book fayre
5.12.18—Whole School Panto Trip
12.12.18 -Christmas dinner
14.12.18—Christmas Jumper Day
21.12.18—Training Day—school closed to pupils. School closed for Christmas
07.01.19—Training Day—school closed to pupils. School reopens: Tues 8th Jan

Happy Birthday to all our children who celebrate their birthdays in November:

Rec: Scarlett,Subhan,Haziq

1: Alex, Hannah, Kacper, Jack

2: Clara, Lucas, Daniel W

4: Maja,Heitor

5: Georgina,Taylor-Grace, Harry Krishan

6: Amerea, Priestly, Nana, Oliver

Healthy School

Our school is part of the Healthy Schools Programme. This means we promote keeping healthy through education on diet and exercise. Last month I added a healthy lunchbox leaflet to support parents with providing a range of balanced, healthy lunches and reminded parents that we are a nut free school. Recent media articles have demonstrated how deadly an allergy to nuts and seeds can be. It is not a risk to take with such young children. Useful website— <http://www.kidswithfoodallergies.org/page/whats-the-big-deal-about-food-allergies.aspx>



Can I remind parents that we ask parents to send their children in with fruit or vegetables for break time snack. Snack bars, 'fruit winders' etc often have nuts in or contain high levels of sugar.

Raisins = healthy—chocolate covered raisins = not healthy. Also small fruits and vegetable such as grapes and small tomatoes need to be halved to reduce risk of choking.

Christmas Performances—EYFS, Year 1 & 2 will have a joint performance and Year 3-5 will have a joint performance. This should provide more seats at each performance. These are the provisional dates which will be confirmed nearer the time.

EYFS, Year 1 & 2

Monday 17th December — 9.30

Tuesday 18th December - 2.30

Year 3-5

Monday 17th December — 5.30

Tuesday 18th December - 9.30

Safeguarding is Everybody's Responsibility

Eastlands Primary School

Lansdowne Place, Rugby CV21 3RY Tel: 01788 57328

Eastlands Primary School

Value of the Month- Positivity



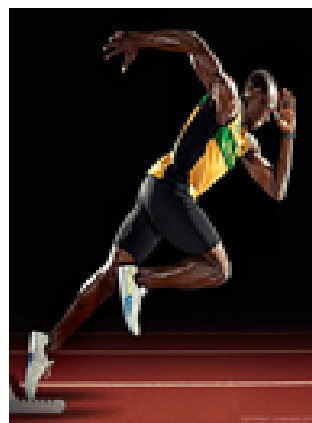
Positivity (noun)-the practice of being or tendency to be positive or optimistic in attitude.
 "pupils draw power from the positivity of their teachers"

In Reception we went on an Autumn walk and thought about all the positive aspects that seasonal changes can have. We used our



senses to explore the autumn environment.

We can play in the leaves and throw them in the air-it's fun!



Year 6 have been learning about the life of Usain Bolt. They have understood that even though everything was not easy for him, he remained positive, through the help of his mother and his coaches, to then go on to achieve amazing feats!

'Positive attitude means that you are confident and ready to tackle the day' - Jessica, Year 4 Elephants

Year 3

"When we enjoy the lessons because it is fun - we learn more so that's positive!"



We all have the right to feel safe all the time.

Eastlands Primary School Protective Behaviours Curriculum

Eastlands Primary School

Governor Profile— Miss Shipp (Nursery Teacher Eastlands Primary School)

Some of the community reading this newsletter will be aware that I am the Nursery teacher here at Eastlands. However, I also have other responsibilities within the school, one of these is being a part of the Governing Body. I was elected as staff governor in January 2017 after joining the teaching team the previous September. Prior to this, I had completed a Childhood Studies degree and had been involved with education and services for children working in children's centres, then completing my PGCE, specialising in the Early Years.

I initially became a staff governor because I wanted to get a broader view of how our school works from a different perspective, understanding what drives key decisions. I was interested in the financial side and how Eastlands were dealing with the budget cuts and as a result I now fully appreciate the skill and hard work it takes to balance a school budget. Over the last 18 months I have served as a useful link between our school staff and the governing body, my role primarily being to represent staff but to also communicate views on both parts.

School life can be challenging at times for all involved, but I can honestly say that the staff at Eastlands work extremely hard to create a safe and inspiring environment, putting the children first in everything they do. I am pleased to know that the Governing Body are able to see this in action when they visit school and they share our views to ensure we consistently provide the highest quality of education to your children.

Community - Harvest Donations & Wear it Pink

Thank you to parents for their generosity for the harvest collection and Wear It Pink. The harvest donations have been given to Rugby Food Bank.



This year we raised for £403.14 through donations and a cake sale. This is nearly £67 more than last year.

PSA

The PSA team continue to work hard on behalf of our school.

On Tuesday 23rd October they held the very successful Spooky Disco.

Thank you!



The next major event will be the annual Christmas Fayre on the 30th November.

We hope to see many of you there.

Thank you to all our parents for the continued support in all aspects of school life.

PGCE Trainee Teachers :

There are 2 Post Graduate teachers in school who will be working with us over the next four weeks.

Mr Maxim in Nursery

Mr Rodd in Year 5.

We all have the right to feel safe all the time.

Eastlands Primary School Protective Behaviours Curriculum

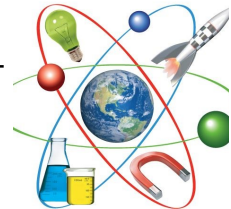
Eastlands Primary School

Science teaching in school 2018-19

For the second year running, Eastlands Primary School has bought into a package of science curriculum and training called Empiribox. The school receives boxes of specialist equipment to deliver exciting, motivating and 'talked about' lessons.



Please do explore this website as there are excellent references from Professor Lord Robert Winston and Professor Brian Cox OBE regarding Empiribox and science in the curriculum.



Mathematics Mastery 2018.19

This term has been the start to our second year on Mathematics Mastery: a maths programme which promotes a love of learning maths used in Year's R to Year 3. Every child can enjoy and succeed in mathematics as long as they are given the appropriate learning opportunities, the programme insists on our teachers developing a growth mindset with our children which enables them to develop resilience and confidence.

Children are given opportunities to learn and deepen their understanding of mathematical language this then strengthens conceptual understanding by enabling pupils to explain and reason. This is carefully introduced and reinforced through frequent discussion to ensure it is meaningfully understood, ask the children about their daily Talk tasks.

Children are also given time and opportunities in lessons to fully explore mathematical concepts. The challenge comes from investigating ideas in new and complex ways – rather than accelerating through new topics. Successful mathematicians are known to develop mathematical 'habits of mind'. To encourage this, we support our children to be systematic, generalise and seek out patterns. Our teachers classroom questioning is a key element of this.

Furthermore, teachers are enabling learners to solve new problems in unfamiliar contexts as this is the ultimate aim of mathematics education. They learn to identify, apply and connect ideas so that they can tackle new and more complex problems.

The Mathematics Mastery programme will eventually be taught in all year groups, with a new year group a year introduced. All our teachers are involved in the high-quality training programme from the team behind Mathematics Mastery alongside planned training provided by Mrs Warrington who is the lead at Eastlands to further develop their skills in their delivery of mathematics lessons. We are looking forward to seeing the impact of this programme on our maths standards across school and so far it is looking very positive.

School Dinners

We employ Educaterers to cook our school meals. Our school meals are very good value at just £2.30. Please find attached a leaflet to show how the foods are sourced. You may find this leaflet helpful if you are considering school meals for your child.



Warwickshire County Caterers

Where our ingredients
come from



TOP 5 FOODIE FACTS



- 
1. We are specialists in school catering serving over 110,000 meals every week.
 2. All our menus meet the School Food Standards and at least 75% are freshly prepared by our 650+ fully trained, professional kitchen teams.
 3. We are certified with the ISO 9001 Quality Management System, our commitment to continuous improvement.
 4. Our staff undertake allergen awareness training and we provide menu advice and support for customers with food allergens and intolerances.
 5. We work with NHS dietetics teams across Warwickshire to support customers with special dietary needs.

MEAT



We source organic beef from Lower Hurst Farm in Derbyshire and serve farm assured and RSPCA freedom foods accredited pork on our menus. All our farm assured red tractor chicken is British and our tasty award winning pork sausages are produced for us by West Midlands supplier, The UK Foodhall.



ES 634414



EGGS

Every egg we use is a free range egg and comes from a local regional farm.

FISH



Our menus are free from endangered fish. Certified sustainable seafood is labelled MSC on our menu.



FAIRTRADE

The sugar and drinking chocolate we use is fair trade.

DAIRY

We serve organic Yeo Valley yoghurts and organic semi skimmed milk from Shropshire on our menus everyday.



BAKED GOODS

Bread is freshly baked on site everyday. All our cakes and biscuits are homemade, we don't use any packet mixes.



FRESH

Fruits and vegetables are mostly sourced from the UK and our local region, to minimise fuel emissions from long haul transportation and support UK producers.



PACKAGING

The packaging we use for our deli bags and packed lunches is all compostable.



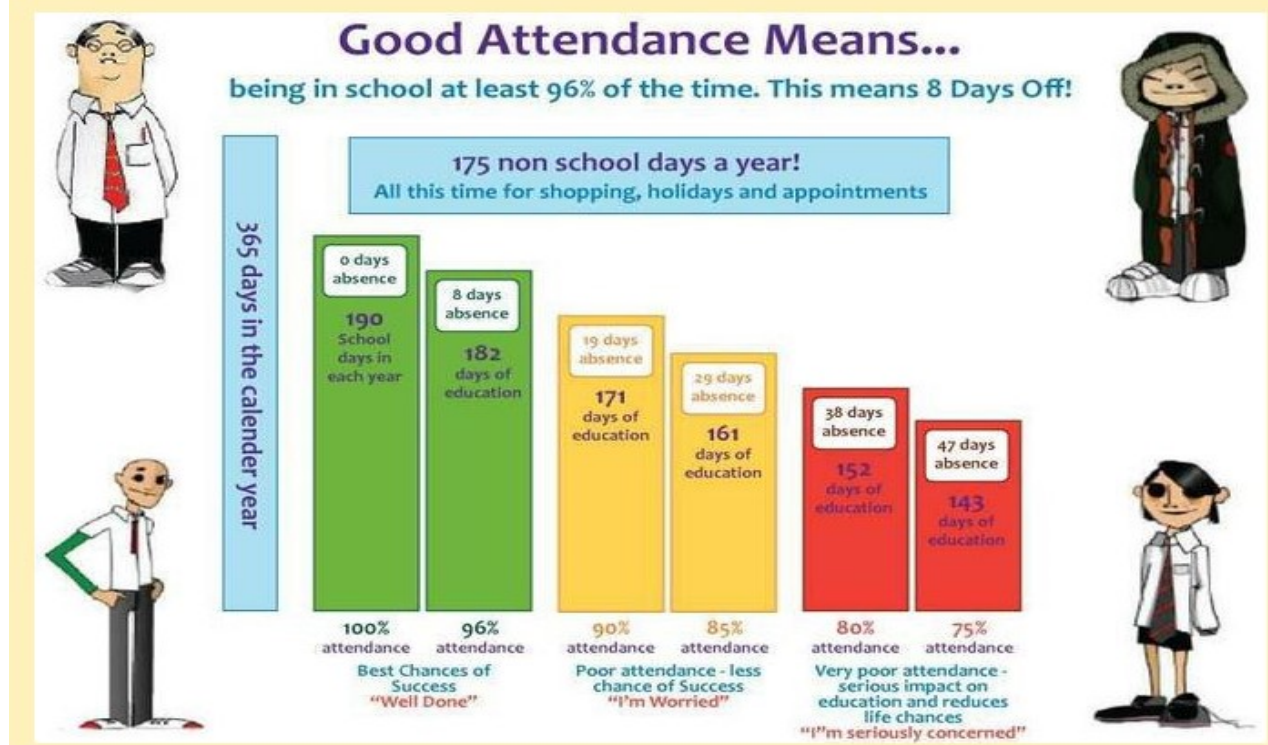
Eastlands Primary School

Bad weather—We are now into the time of year when bad weather can impact on school. If we have an emergency school closure or part day closure you will be informed through Rugby FM, our school website and by text message as soon as possible.

Our school attendance target is:-

96.5%

ATTENDANCE TARGET



Computer Fun

This month's recommended website for children:-

Ks1 [Phonics games](http://www.familylearning.org.uk/phonics_games.html)

http://www.familylearning.org.uk/phonics_games.html



Always supervise your children when they are using the internet

KS2 – [Crick](http://www.crickweb.co.uk/ks2literacy.html)

<http://www.crickweb.co.uk/ks2literacy.html>

Eastlands Primary School

LEAVE OF ABSENCE DURING TERM TIME 2017-2018

- UPDATED INFORMATION FOR PARENTS

The Supreme Court recently reached a decision in the case of *Platt v Isle of Wight Council* which has clarified the law on unauthorised leave, including holidays, during term time. The parents of children of compulsory school age are required to ensure that they attend school on a regular basis. The Supreme Court has made clear that attending school 'regularly' means that the children must attend school on every day that they are required to do so. As such, the parents of any child who are absent from school without authorisation for any length of time are likely to be considered as committing an offence under s444 of the Education Act 1996.

Head Teachers retain the ability to authorise leave in accordance with the Education (Pupil Registration) (England) Regulations 2006. When considering such requests for a leave of absence, the school are obliged to act within the law. Head Teachers may not grant any leave of absence during term time unless there are exceptional circumstances relating to the application. If the leave is granted, head teachers are able to determine the number of school days a child can be absent for.

It is for the Head Teacher to decide what is 'exceptional' and it is at their discretion if the circumstances warrant the leave to be granted. The school can only consider Leave of Absence requests which are made by the 'resident' parent.

Each application for a leave of absence will be considered on a case by case basis and on its own merits.

Where applications for leave of absence are made in advance and refused, the child will be required to be in school on the dates set out in the application. If the child is absent during that period, it will be recorded as an unauthorised absence, which may result in legal action being taken against the parent(s), by way of a Fixed Penalty Notice.

Failure to make an application for leave in advance can also result in a Fixed Penalty Notice being issued to the parent(s).

All matters of unauthorised absence relating to a Leave of Absence will be referred to the Attendance, Compliance and Enforcement Service of Warwickshire County Council.

It is important to note, Fixed Penalty Notices are issued to each parent of each absent child, (for example 2 children and 2 parents, means each parent will receive 2 invoices in the amount of £120 each, totalling £240 for both children, this is reduced to £60 per child if paid within 21 days).

Where a Fixed Penalty Notice is not paid within the required timeframe as set out on the notice, the matter will be referred to Warwickshire County Council's Legal Services to consider instigating criminal proceedings under S444 Education Act 1996.

Fixed Penalty Notices are issued in accordance with Warwickshire County Council's Code of Conduct for Penalty Notices.

We greatly appreciate parental support to reduce the total amount of days lost due to holidays. We are committed to working in partnership with you to enable your child to reach their academic targets and to support their social development. For this to happen we need to keep individual attendance as high **as possible - we all need to play our part.**

Your child's progress academically as well as socially is our shared priority.