

Eastlands Primary School

September 2018

EPS Attendance

Target **96.5%**

Academic year '17-'18:

R— 97%

Y1— 96%

Y2—96%

Y3—97%

Y4— 96%

Y5—96%

Y6— 95%

Overall attendance for the whole school for the last academic year was **96.2%.**

This is below our target.

Please help us to increase this % by ensuring your child attendance is good or better.

Is your child's class

"On time at 5 to 9" ?

School opens at **8.45am** when children can go to their classrooms and get ready for the start of the school day. Please make sure that your child is in their class, ready to work by **8.55am** at the latest.

Dear Parents,

I would like to warmly welcome everyone to the start of a new academic year. I hope you all had a restful break. A very warm welcome to families new to school.

School site

The main school pedestrian gate is unlocked from 8.35 all day for access. The back 'field' gate is open at 8.40 in the morning and 3.15 in the afternoon. We do request all parents and visitors close the gates for additional security. Many thanks for your continued support.

Term dates. -

5.9.18—School opens to pupils.

17.9.18—Meet & Greet with new class teacher

24. 9.18—RWInc— parents evening

2.10.18—Individual photos

5.10.18—PSA quiz night

Happy Birthday to all our children who celebrate their birthdays in September:

Rec: Lily, Lilly, Joseph, Scarlett
Year 2: Harley, Isabelle, Freddie, Michael

Year 3: Aiden,

Year 4: George, Florence, Heidi, Sahasra, Ronith

Year 5: Nicole, Vanesa, Amelia, Sophie

Year 6: Callum

New members of staff joining us this September are:-

Miss Grubb - Year 4.

Mr Northedge - Year 5

Mr Clements—Teaching Assistant

Improving Communication - In order to deal with any queries or concerns you may have you need to:-

1. Firstly, contact your child's **class teacher**.
2. If you have further concerns you can always ask to speak to
Mrs Goff who leads Early Years
Miss Towers who leads Year 1 & 2 or
Mrs Warrington who is KS2 lead and our Deputy Head Teacher.

Twitter – Please be aware we use Twitter as a means of communication to share school messages. If you have any queries you will need to ask at the school admin office.

School website is updated regularly and may answer some of your questions .



Safeguarding is Everybody's Responsibility

Eastlands Primary School

Lansdowne Place, Rugby CV21 3RY Tel: 01788 57328

Eastlands Primary School

Premises update

Over the summer ,fencing at the front of the school has been replaced. The extractors replacement in the kitchen is on schedule to finish shortly. I was hoping to have some of the toilets in KS1 and KS2 refurbished over the summer too. Unfortunately, due to delays on the part of the manufacturer this development will now take place later this term. Internally, there have been various painting, repair and maintenance projects. My thanks to Mr Andy Roberts, our school caretaker, for all his hard work over the summer break.

Curriculum Information

Read, Write, Inc. Phonics

We use the Read Write Inc. Phonics programme in school. This is a complete literacy programme which teaches reading and writing to younger children and provides additional support for older children who need to make rapid progress to meet National Standards. Parents, new to school, are invited in for an information session about Read Write Inc. on **Monday 24th September at 5pm**. This will provide you with a range of information about the programme and enable you to support your child's learning at home.



We are a 'Maths Mastery' School. This is a programme of maths teaching that will be built on year by year as your child progresses through school. This year we are focussing on Early Years, Year 1, Year 2 & Year 3 maths. All staff receive training on this during the year.

Science:- We purchase the Empiribox science scheme for Year 1-6 and staff receive termly training on this.



Educational Visits for 2018.19

We work hard to ensure that your children are provided with a wide range of first hand experiences to motivate and excite them about their learning challenge curriculum. There will be opportunities this year and information is available on the school website.

Please ensure you are aware of the process for paying amid providing consent for educational visits.

Reading support in school

We are looking for volunteers to hear readers, so pop a note in your child's Home School Communication book if you are interested.

We all have the right to feel safe all the time.

Eastlands Primary School Protective Behaviours Curriculum

Eastlands Primary School

School Uniform

We feel that it is important for our pupils to wear school colours as this promotes a positive image of our school and reinforces collective responsibility. This can be purchased from Webb Ellis, Rugby or at www.tesco.com/ues

Please ensure that each item of clothing is marked with your child's name.

Boys	Girls
Winter: Maroon sweatshirt or cardigan (with the school logo) Grey long trousers White polo shirt (plain or with the school logo) or shirt Black sensible school shoes Grey socks School book bag/backpack with logo	Winter: Maroon sweatshirt or cardigan (with the school logo) Grey skirt, pinafore dress or long trousers White polo shirt (plain or with the school logo) or blouse Black sensible school shoes White/grey socks or grey tights School book bag/backpack with logo
Summer: Grey shorts	Summer: Maroon and white gingham dress
Footwear: Children need to have an additional set of footwear to wear outside at play times.	

PE Kit

In addition, for P.E. your child will need the following items which can be stored in a named bag.

Reception and Key Stage 1	White T shirt, Black shorts, Black plimsolls.
Key Stage 2	White T shirt, Black shorts, Black plimsolls or trainers with non-marking soles

Jewellery of any kind should not be worn. The exception to this would be a watch which must be removed for PE. If ears are pierced, then studs only should be worn as any other type of earring poses a serious health and safety issue.

School Admissions for September 2019

The online application process for children starting Primary School in September 2019 opens on Monday 17th September. The closing date for applications is 15th January 2019.

Further details are available at: <http://www.warwickshire.gov.uk/primaryschool>

The online application process for children starting Secondary School in September 2019 is also open. The closing date for applications is 31st October 2018. Further details are available at: <http://www.warwickshire.gov.uk/secondaryschool>

We all have the right to feel safe all the time.

Eastlands Primary School Protective Behaviours Curriculum

Eastlands Primary School

School Vision In Action

Be determined and show resilience

One of our school aims is to build determination and resilience in all our pupils. These are lifelong qualities for success. We give our children opportunities to develop the knowledge and skills they will need for later on in life. At Eastlands, our displays, around school, reflect the children's' learning. Children develop these skills through the school curriculum and through extra-curricular activities such as eco club, e-cadets and sports.

It is important that children show determination and resilience as they will encounter challenge in all aspects of Eastland's school life and beyond.



PARENT **SURVEY**

Thank you for your responses to the parent survey sent out in June 2018.

Question number	Question	Strongly agree and agree	
2	My child is happy at this school.	95%	
3	My child feels safe at this school	92.5%	
4	My child makes good progress at this school	90%	
5	My child is well looked after at this school.	95%	
6	My child is taught well at this school	95%	
7	My child receives appropriate homework for their age	92.5%	This has increased by 13%
8	This school makes sure its pupils are well behaved.	90%	
9	This school deals effectively with bullying	87%	
10	The school is well led and managed	95%	This has increased by 15%
11	The school responds well to any concerns I raise.	82.5%	
12	I receive valuable information from the school about my child's progress	87.5%	
13	Would you recommend this school to another parent?	95%	

We all have the right to feel safe all the time.

Eastlands Primary School Protective Behaviours Curriculum

Eastlands Primary School

PARENT SURVEY

We invited your thoughts on how to improve
Home School Communication Books (HSCB)

You said:	We say:
Home School Communication Book is very useful.	Thank you
It would be good to know what children can earn stamps for.	This should be covered in the start of term meeting with parent and teacher.
A calendar to complete through the year with key dates for each year group.	We can try to add this in next year.
Teachers to look at it everyday. Communication through the book is very poor. Term wise topics which they are going to learn	It is simply not possible to look at 30 books each morning. Children are encouraged to place book on teachers table if there is a message. Staff are at the main doors for urgent messages.
Make them stronger	We have requested this of the company.
Please remember we put the topics to be covered in each year group on the website in September	

PARENT SURVEY

We invited your thoughts on improving Termly Learning Conferences

You said:	We say:
You like looking through the class books	Feedback to school governors is also very positive.
TLC has been very good. However more in depth information about my child's progress would be encouraged.	At the termly learning conference targets for the child and how these can be supported at home are agreed. At the end of each term a written report is provided that also has a target on. So targets can be set up to six times a year. The termly report also covers your child's abilities and progress.
It is sometimes difficult to have honest conversations with teachers when the child is present.	We do encourage all conversations about a child should involve the child. You can arrange a meeting with you class teacher at different times if you have a concern.
Online portal so we can see for ourselves how my child is getting on with his lessons.	On line portals require additional time to keep updated so they are purposeful. We would not consider this at this point.
Remember the appointments for TLC start from 8.00 am until 5.30 pm. The aim of this is to provide times that suit all shifts at work.	

We all have the right to feel safe all the time.

Eastlands Primary School

If we have an emergency school closure or part day closure you will be informed through Rugby FM, our school website and by text message as soon as possible.

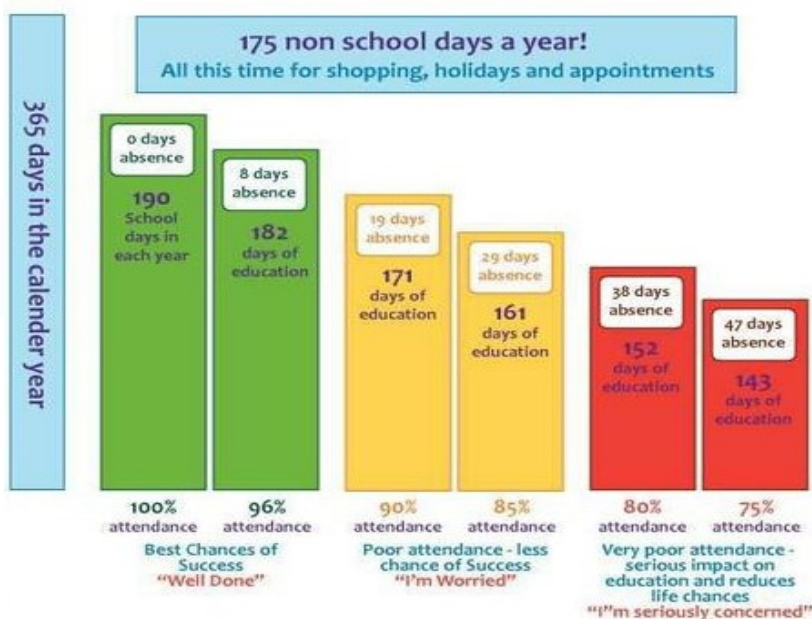
Our school attendance target is:-

96.5%

ATTENDANCE TARGET

Good Attendance Means...

being in school at least 96% of the time. This means 8 Days Off!



Computer Fun

This month's recommended website for children:-

<http://www.lego.com/en-gb/games>



Always supervise your children when they are using the internet

KS2 – [Aaron Shepherd](#)

<http://www.aaronshp.com/stories/index.html>

Parents E-safety tips

Visit <http://www.childnet.com/> and visit parents and carers section

We all have the right to feel safe all the time.

Eastlands Primary School Protective Behaviours Curriculum

Eastlands Primary School

LEAVE OF ABSENCE DURING TERM TIME UPDATED INFORMATION FOR PARENTS

The Supreme Court recently reached a decision in the case of *Platt v Isle of Wight Council* which has clarified the law on unauthorised leave, including holidays, during term time. The parents of children of compulsory school age are required to ensure that they attend school on a regular basis. The Supreme Court has made clear that attending school 'regularly' means that the children must attend school on every day that they are required to do so. As such, the parents of any child who is absent from school without authorisation for any length of time are likely to be considered as committing an offence under s444 of the Education Act 1996.

Head Teachers retain the ability to authorise leave in accordance with the Education (Pupil Registration) (England) Regulations 2006. When considering such requests for a leave of absence, the school are obliged to act within the law. Head Teachers may not grant any leave of absence during term time unless there are exceptional circumstances relating to the application. If the leave is granted, head teachers are able to determine the number of school days a child can be absent for.

It is for the Head Teacher to decide what is 'exceptional' and it is at their discretion if the circumstances warrant the leave to be granted. The school can only consider Leave of Absence requests which are made by the 'resident' parent.

Each application for a leave of absence will be considered on a case by case basis and on its own merits.

Where applications for leave of absence are made in advance and refused, the child will be required to be in school on the dates set out in the application. If the child is absent during that period, it will be recorded as an unauthorised absence, which may result in legal action being taken against the parent(s), by way of a Fixed Penalty Notice.

Failure to make an application for leave in advance can also result in a Fixed Penalty Notice being issued to the parent(s).

All matters of unauthorised absence relating to a Leave of Absence will be referred to the Attendance, Compliance and Enforcement Service of Warwickshire County Council

It is important to note, Fixed Penalty Notices are issued to each parent of each absent child, (for example 2 children and 2 parents, means each parent will receive 2 invoices in the amount of £120 each, totalling £240 for both children, this is reduced to £60 per child if paid within 21 days).

Where a Fixed Penalty Notice is not paid within the required timeframe as set out on the notice, the matter will be referred to Warwickshire County Council's Legal Services to consider instigating criminal proceedings under S444 Education Act 1996.

Fixed Penalty Notices are issued in accordance with Warwickshire County Council's Code of Conduct for Penalty Notices.

Your child's progress academically as well as socially is our shared priority