

Eastlands Primary School

June 2018

EPS Attendance

Target **96.5%**

Attendance in May:

R— 97.9%

Y1— 95.1%

Y2—95.9%

Y3—97.3%

Y4— 94.3%

Y5—96.1%

Y6— 97.5%

Overall attendance for the whole school for May was averaging at **96%**.

This is below our target.

Please help us to maintain this high % by ensuring your child attendance is good or better.

Is your child's class

“On time at 5 to 9” ?

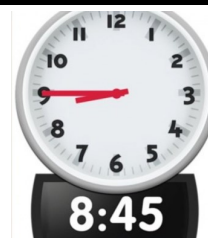
School opens at **8.45am** when children can go to their classrooms and get ready for the start of the school day. Please make sure that your child is in their class, ready to work by **8.55am** at the latest.

Year 6 end of term dates.

8th–11th June—Year 6 residential -Skern

10th July—Year 6 transition day

18th July 9.15 —Year 6 Leavers assembly and Leavers Ball (6.00)



Term dates. -

11th June —Year 1 Phonics screening tests begin

11th June—Science and Health week

18th June—New Reception parents evening

21st June—Sports Day

28th June - (Year 3R, 4,5,6) & 2nd July (N, R, Year 1, 2, 3T) Termly Learning Conferences

29th June—PSA summer fayre

5th July—EPS has Talent event

13th July—Reports to parents

16th July.-Celebration assembly

School closes 21st July for summer break

Happy Birthday to all our children who celebrate their birthdays in June

Rec: Micah, Izabela, Jasmin

1: Julia, Elliott, Dylan, Harriett, Zac

2: Freya, Astrid

3: Connor, Demi, Joy, Aariz, Imogen, Eden

4: Mason, Ethan, Sophie

5: Jasper, Rehan, Rafi, Erin

Used books

If you have books that your children have outgrown could you send them into school. All books should be in good condition please.

They will be added to our AR collection to increase choice.

Royal Wedding

Thank you all parents for your support on this occasion.

We sold the remaining cakes left over from the Royal Wedding celebration and raised £35.20.

This money will be put towards purchase of new books for next year.



Safeguarding is Everybody's Responsibility

Eastlands Primary School

Lansdowne Place, Rugby CV21 3RY Tel: 01788 57328

Eastlands Primary School

School Vision In Action

A further school aim is to develop our school so that it has consistency at its heart, that it is a creative and exciting place for our children and for the community, that we have high expectations of each other and that we hold each other to account. The science curriculum is a good example of this. We invest many hours into staff training and this leads to exciting, imaginative lesson. Feedback from the children is always positive. This aim links to having ambitions for our children.



Dear Parents,

We are fast approaching the end of this academic year. Many thanks to all our parents for your support over the year. Children and staff have worked very hard and Year 6 are now looking forward to their residential at Skern. I hope they have a great time.

Staffing

At Eastlands we have an excellent dedicated staff team. I would like to thank all the teachers, teaching assistants, admin team, lunchtime staff, caretaking & cleaning team, before and after school staff and kitchen staff for their commitment to Eastlands and our pupils this year.

I would, in particular, like to thank Mr Poole who has worked in Year 4. Mr Poole is moving on this year as he would like to take some time to travel. Over the last two years Mr Poole has worked incredibly hard for Year 4 children and for the school as a whole. He has become a valued member of our team who will be missed by all. I would like to take this opportunity to wish him success and happiness in the future.

Health & safety

During the course of the school year we have practised our emergency procedures. These have included:-

- 1) Fire practices (evacuation from the school building onto the playground)
- 2) 'Invacuation' (from the school playground into the school building) and
- 3) Lock down procedure to respond to a local area emergency e.g. toxic smoke from a local factory.

Rehearsing emergency procedures means we are better prepared to respond.

We all have the right to feel safe all the time.

Eastlands Primary School

HARRIS C of E ACADEMY SSP Presents:

Bikeability – May Half Term Holiday Courses

LEVEL 2 TRAINING FOR PUPILS IN YEARS 5 & 6:

This training prepares students for cycling on the public highway for short journeys such as from home to school and will be run from Harris C of E Academy's Sports Centre in Rugby.

Course Dates (over 2 days. Both days must be attended):

Thursday 31st May 2018 & Friday 1st June 2018 from 9.15am to 12.30pm

Cost: £20 per person payable in advance.

LEVEL 1 TRAINING PUPILS IN YEARS 3, 4, 5 & 6:

This training teaches basic cycle control skills in a safe environment away from traffic and will be run at Harris CofE Academy's Sport Centre in Rugby. Children do need to be able to ride a bike before coming on the course.

Course: Wednesday 30th May 2018 from 9.30am to 11.45am

Cost: £12 per person payable in advance.

Early booking is essential as places are limited and will be filled on a first come first served basis. Courses will only run if minimum numbers are reached. Children will need to have their own bicycle.

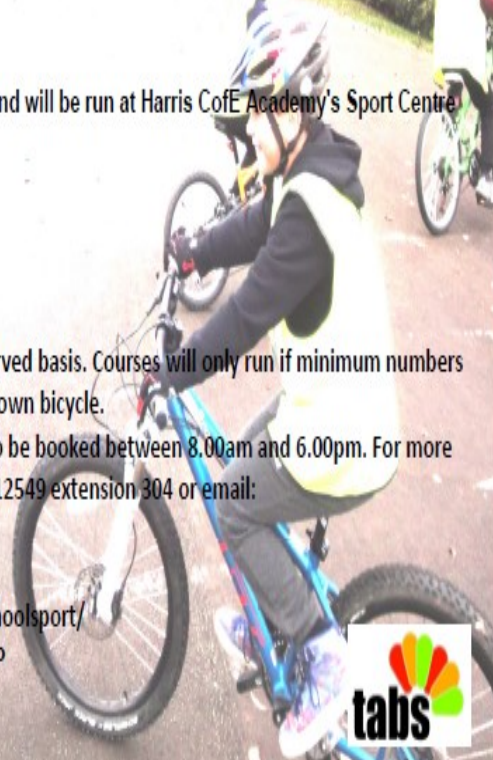
For an additional charge, wrap around care in the Sports Centre holiday club may also be booked between 8.00am and 6.00pm. For more information, or to book a place, please call Debbie on 01788 812549 extension 304 or email:

ssp@harriscofeacademy.co.uk

or message us on Facebook

<https://www.facebook.com/harrisacademyschoolsport/>

Follow us on Twitter @Harris_SSP



We all have the right to feel safe all the time.

Eastlands Primary School Protective Behaviours Curriculum

Eastlands Primary School

School Dinners

We employ 'Educaterers' to cook our school meals. This team will be attending the Nursery and Reception new intake evenings to show the high quality meals we provide in school. Our school meals are very good value at just £2.20 from September 2018.

Online safety reminder—Children under 13 should not have Facebook accounts. We will speak to parents if we are aware of primary age children having this or any other account they are too young for. We may speak to the social media site directly.

Any social networking site has potential for good and bad – it's the privacy settings and behaviour of the individual which are more important.

Parents need to monitor all social media and more importantly talk to their children about safe use.



Internet Matters covers a wide range of topics for parents including safe internet settings.

There is a video here which promotes safe use and highlights how children can keep themselves safe

Community

School uniform can be purchased from:

Webb Ellis shop (St Mathews Street, Rugby) <http://www.webb-ellis.co.uk/>

Tesco School Uniform Embroidery Service tesco.com/ues

Eastlands Has Got Talent - 5th July auditions

The children need to practice their talent and let their teacher they would like to enter. Other children will be watching them perform in the hall.

Thank You!

To Joel's dad (Year 1 parent) for all his help with the work on the pond and fish.

We all have the right to feel safe all the time.

Eastlands Primary School Protective Behaviours Curriculum



Be the best you can be!



An opportunity to discuss admissions for September 2019

Open Evening

**Tuesday 3rd July 2018
7.00pm to 9.00pm**

Headteacher Presentation
7.00pm and 8.00pm Main Hall

An opportunity to:

- Tour our facilities
- Talk to staff and students
- Meet the new Headteacher

Bilton School has recently joined the Stowe Valley Multi-Academy Trust, led by the outstanding Southam College.

'I am really excited about the future of Bilton School because of the brilliant students, dedicated staff and extremely supportive parents. I look forward to welcoming you to our school.'

Ranjit Samra, CEO, Stowe Valley Multi Academy Trust

'There is such a great atmosphere at Bilton with fantastic teachers to help you achieve.'

Student at Bilton

'My recent visit to the school was really personal and informative. I'd definitely recommend it.'

Prospective Parent

'As a teacher in the school I know how hard-working the staff are. I wanted my son to go to our local school and take advantage of all the opportunities that Bilton School offer.'

Teacher at Bilton

'As the newly appointed Headteacher of Bilton I am committed to leading our students, staff and parents on the positive route of school improvement set out by The Stowe Valley Multi Academy Trust.'

My vision is to create a learning community whose ethos ensures that Bilton students are able to achieve excellence in all that they do'

Tim Chambers, Headteacher



Stowe Valley Multi Academy Trust

Registered Office: Southam College, Welsh Road West, Southam, Warwickshire, CV47 0JW
Registered in England No: 10443759. A Company Limited by Guarantee



@BiltonSchool



COMMUNITY FUN DAY AT THE GEC RECREATION GROUND

Hillmorton Road, Rugby



**SATURDAY
30TH JUNE**

11AM - 3PM



FREE family activities:

- climbing wall
- inflatables
- sumo suits

**Meet local police and fire teams,
community groups and much more!**



**Come and tell us what
you want to see at the
pavilion in the future!**

FOR MORE INFORMATION EMAIL RUGBY@WARWICKSHIRE.GOV.UK

Warwickshire School Health and Wellbeing Service

Your school nurse led service is friendly, confidential and free for all school aged children (aged 5 – 19 years*) and their families. We can offer you and your child support on a wide range of health related issues such as:



Child Development

e.g. bedwetting, sleep, diet

Relationships

Physical Health

Healthy Eating & Lifestyle Choices

Emotional & Mental Health

Bullying

Managing Medicines

Childhood Immunisations

Smoking

Alcohol & Drugs

Sexual Health

If your child has a learning need, disability or long term health condition (e.g. epilepsy, asthma, diabetes, allergies) we can help you get the right care and support.

Friendly

Helpful

Safe

*up to 25 years for young people with special educational needs or disabilities.

For more information about this service please contact the team on:

03300 245 204 or

warwickshireSH&WBSservice@compass-uk.org

Compass



Eastlands Primary School

School Closure in Emergency —We If we have an emergency school closure or part day closure you will be informed through Rugby FM, our school website, on www.warwickshire.gov.uk/schoolclosure and by text message as soon as possible.

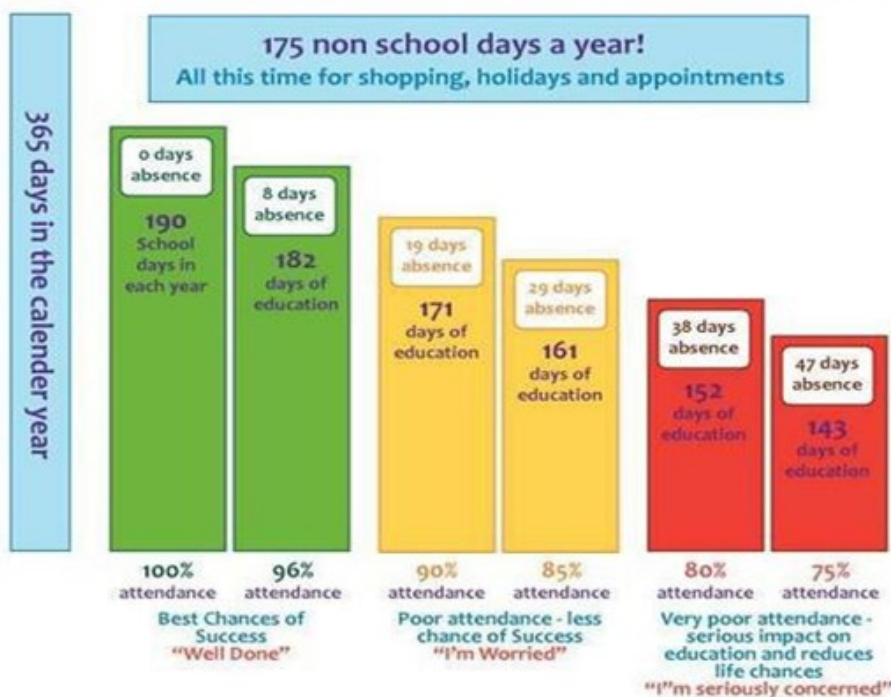
ATTENDANCE TARGET

Our school attendance target is:-

96.5%

Good Attendance Means...

being in school at least 96% of the time. This means 8 Days Off!



Computer Fun

This month's recommended website for children:-

[KS1](#) – Nursery Rhymes

<http://www.bbc.co.uk/learning/schoolradio/subjects/earlylearning/nurserysongs>



Always supervise your children when they are using the internet

Ks2 - [Topmarks - English](#)

EverySchool.co.uk - English-key-stage-2



Safeguarding is Everybody's Responsibility

Eastlands Primary School

LEAVE OF ABSENCE DURING TERM TIME

- UPDATED INFORMATION FOR PARENTS

The Supreme Court recently reached a decision in the case of *Platt v Isle of Wight Council* which has clarified the law on unauthorised leave, including holidays, during term time. The parents of children of compulsory school age are required to ensure that they attend school on a regular basis. The Supreme Court has made clear that attending school 'regularly' means that the children must attend school on every day that they are required to do so. As such, the parents of any child who are absent from school without authorisation for any length of time are likely to be considered as committing an offence under s444 of the Education Act 1996.

Head Teachers retain the ability to authorise leave in accordance with the Education (Pupil Registration) (England) Regulations 2006. When considering such requests for a leave of absence, the school are obliged to act within the law. Head Teachers may not grant any leave of absence during term time unless there are exceptional circumstances relating to the application. If the leave is granted, head teachers are able to determine the number of school days a child can be absent for.

It is for the Head Teacher to decide what is 'exceptional' and it is at their discretion if the circumstances warrant the leave to be granted. The school can only consider Leave of Absence requests which are made by the 'resident' parent.

Each application for a leave of absence will be considered on a case by case basis and on its own merits.

Where applications for leave of absence are made in advance and refused, the child will be required to be in school on the dates set out in the application. If the child is absent during that period, it will be recorded as an unauthorised absence, which may result in legal action being taken against the parent(s), by way of a Fixed Penalty Notice.

Failure to make an application for leave in advance can also result in a Fixed Penalty Notice being issued to the parent(s).

All matters of unauthorised absence relating to a Leave of Absence will be referred to the Attendance, Compliance and Enforcement Service of Warwickshire County Council.

It is important to note, Fixed Penalty Notices are issued to each parent of each absent child, (for example 2 children and 2 parents, means each parent will receive 2 invoices in the amount of £120 each, totalling £240 for both children, this is reduced to £60 per child if paid within 21 days).

Where a Fixed Penalty Notice is not paid within the required timeframe as set out on the notice, the matter will be referred to Warwickshire County Council's Legal Services to consider instigating criminal proceedings under S444 Education Act 1996.

Fixed Penalty Notices are issued in accordance with Warwickshire County Council's Code of Conduct for Penalty Notices.

We greatly appreciate parental support to reduce the total amount of days lost due to holidays. We are committed to working in partnership with you to enable your child to reach their academic targets and to support their social development. For this to happen we need to keep individual attendance as high **as possible - we all need to play our part.**

Your child's progress academically as well as socially is our shared priority