

Eastlands Primary School

January 2018

EPS Attendance
Target **96.5%**

R— 96.2%

Y1— 96.1%

Y2— 97.1%

Y3— 95.5%

Y4— 95%

Y5— 95.1%

Y6— 95.6%

Overall attendance
for the whole
school for
December was
averaging at
95.8%.

**This is below
our target.**

Please help us to
raise this % by en-
suring your child
attendance is good
or better.

**Is your child's
class**

**"On time at
5 to 9" ?**

School opens at
8.45am when chil-
dren can go to their
classrooms and get
ready for the start
of the school day.
Please make sure
that your child is in
their class, ready to
work by **8.55am** at
the latest.

Happy New Year to all our parents and
children.

I hope you all had a restful break.

It was lovely to see all the children re-
freshed and ready for school.

Staffing — A warm welcome to Mr Andy Roberts who has been ap-
pointed as our new caretaker. Mr Roberts starts this week.



Term dates. -

12th February & 16th Febru-
ary—Termly Learning confer-
ences

7th March—Class Photographs

Wednesday 28th March —
school closes for Easter.

Thursday 29th March—Staff
Science training day. School
closed to pupils.

Monday 16th April - Summer
term begins

Happy Birthday to all our chil-
dren who celebrate their birthdays
in January:

Rec: Aariah

1: Thomas, Sofija, Princess

2: Lorenzo

3: Reuben, Archie C, Jemima, Ben-
jamin

4: Soren, Mabel, Amelia

5: Sophie, Arden, Catherine

6: Zac, India, Poppy, Mia, Reuben

School Vision.

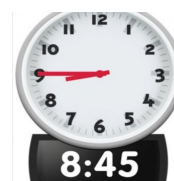
We are developing EPS learning code across the school. Children
are becoming familiar with 'Secrets of Success' language. Please see
the next page.

You will have seen some of this language being used on the 'Star of
the Week' awards.

Punctuality

Can I please remind you that punctuality is just as important as at-
tendance. Children who are late arriving at school often feel flustered
and unprepared to start the day. They may also be missing vital intro-
ductory part of the lesson and will then find it hard to
understand the main part of the lesson.

School is open at 8.45 for children to come in settle
down and be ready to start at 8.55. Thank you for
your continued support.

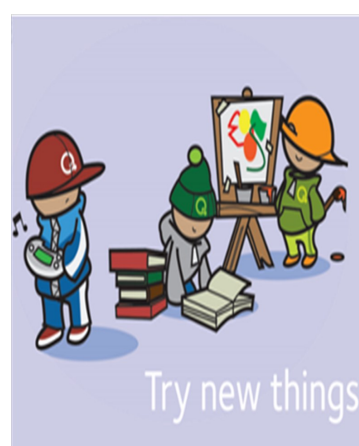
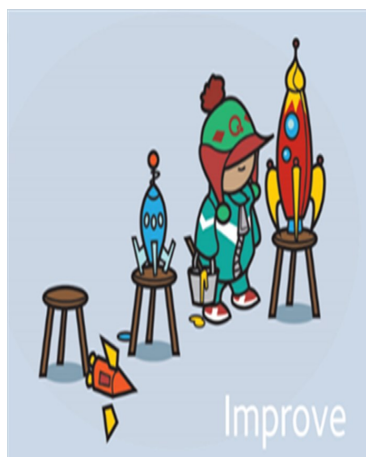
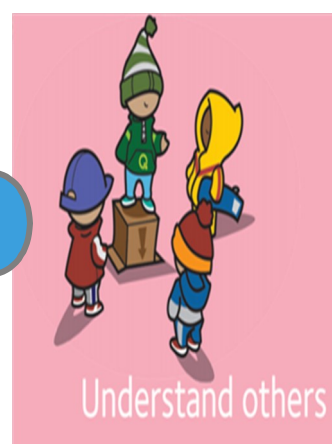


Safeguarding is Everybody's Responsibility

Eastlands Primary School

Lansdowne Place, Rugby CV21 3RY Tel: 01788 57328

Eastlands Primary School



Safeguarding is Everybody's Responsibility

Eastlands Primary School

Lansdowne Place, Rugby CV21 3RY Tel: 01788 57328

Eastlands Primary School

Governors

My name is Kevin Pickering and I'm one of the parent school governors at Eastlands.

I am still relatively new to the role and there is a lot to learn. I am actively trying to take in the position and understand the role fully assist to my potential.

In my short time, the school already has achieved a great deal and touching briefly the OFSTED visit and report was pleasing to read and shows the lengths of what occurs behind the scenes by not only staff but governors and the like, now I would like to take some credit but would be wrong as was abroad at the time getting married.

At time of writing this we are fast approaching the end of the term, and with it brings the lovely winter conditions of ice and snow, now in my full time job it is a very demanding time with the road conditions which can cause numerous collisions and the chaos to travelling and potential delays, but schools are maybe overlooked and having done some research the choice to close a school does not come lightly.

A decision to close a school may appeal to some but others it will cause child arrangements issues, so to close a school the decision would sit with the head teacher applying common sense in assessing the risks and would aim to keep the school open whenever it is safe to do so. The child's welfare is paramount and consideration would focus on whether a child can get to and from school safely, the site is safe, there are enough staff to supervise youngers as majority would travel further than the pupils and the forecast for that day if applicable. The school would then notify parents/guardians, school authorities and the Department of education about any closure. I know, as I have been on the receiving end, this is done via various forms and the school utilise social media productively and effectively.

So on behalf of the Governors, I hope you've all had a great Christmas/New Year and back refreshed for the new term.

Mr Kevin Pickering (Parent Governor)

Safeguarding is Everybody's Responsibility

Eastlands Primary School

Lansdowne Place, Rugby CV21 3RY Tel: 01788 57328

Eastlands Primary School

Parent workshops—

Maths 22.1.17—3.30—KS 1 Focus on Reasoning

Maths workshop—29.1.17 - KS2 - Focus on Reasoning and times tables test for year 4 in the future.

Community

Nov '17 Poppy Appeal raised £123.20



Christmas Jumper day was very successful. As a school we raised £182.35 which is fantastic considering what an expensive time of year December is. Thank you all for your generosity.



PSA

The PSA team continue to work hard on behalf of our school. As well as organising the Christmas Fayre they also sold refreshments and the Christmas performances. Many thanks to this dedicated team who work tirelessly to raise funds for our school.



E-safety : I have added useful You Tube guidance on pages 4 & 5 which have been shared on our website for your information.

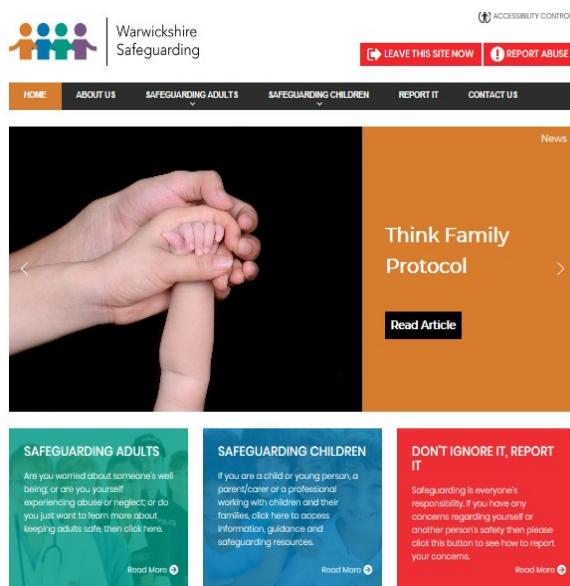
NEW – WSCB Safeguarding Website

There is a new Safeguarding Warwickshire website, a joint website for both Warwickshire Adults and Warwickshire Children Safeguarding Boards.

The website includes information for parents/ carers, children and young people as well as for all professionals working with children and their families in Warwickshire.

The new website address is:

www.safeguardingwarwickshire.co.uk



We all have the right to feel safe all the time.

Eastlands Primary School Protective Behaviours Curriculum

Eastlands Primary School

Child safety on YouTube: parent factsheet

What is the problem?

You may have seen news reports about inappropriate children's videos on YouTube.

These are videos that, at first, appear to be for children, as they include cartoon characters such as Peppa Pig, or characters from Disney films such as Frozen. However, later on the videos become violent or disturbing. One, for example, shows Peppa Pig being tortured at the dentist.

The videos can appear in YouTube search results when children look for genuine children's videos.

YouTube says that such videos will be age-restricted *if they are reported by users*, so they cannot be viewed by anyone under 18.

This factsheet explains how you can protect your child when they are using YouTube apps or the website.

What safety options are there on YouTube Kids?

The YouTube Kids app **automatically filters out inappropriate content**. However, YouTube explains that "no algorithm is perfect" and "your child might find content you don't want him or her to watch".

To help protect your child in YouTube Kids, you can set parental controls and change settings: tap the 'Lock' icon in the bottom corner of any page, enter your custom passcode and click 'Settings'. Here you can:

- Turn the search function off, so your child can only see recommended, curated videos under each category on the home screen: toggle 'Search' to off.
- Set a timer to limit how much time your child spends on the app: select 'Timer' and use the slider bar or the plus and minus icons to set a time limit, then tap 'Start Timer'

You can also block videos or channels you don't want your child to watch:

- Tap the 3 dots ('more') at the top of the video, tap 'Block' and select 'Block this video' or 'Block this channel' to block the whole channel associated with the video
- Tap 'Block' again, then enter the numbers you see written on the screen, or your custom passcode

To report content to YouTube that you think is inappropriate, use the 'flagging function': tap the flag icon next to a video or comment and select your reason for flagging.

The app does have advertising, but YouTube says it restricts adverts that aren't child-friendly.

What safety options are there on YouTube?

Turn on 'restricted mode'

This hides videos that may contain inappropriate content. YouTube says that "no filter is 100% accurate, but it should help you avoid most inappropriate content". To do this:

- On the website: click on the icon in the top-right corner that represents your YouTube account; in the drop-down menu look for 'Restricted Mode'

Eastlands Primary School

Flag inappropriate videos

If you think a video or a comment on a video is inappropriate, you can use the 'flagging feature' to prompt YouTube staff to check it and decide whether to block or restrict it:

Tap or click the flag icon next to a video or comment and select the reason for flagging

Flagged content is constantly reviewed to check for any violation of YouTube's Community Guidelines.

[How else can I help ensure my child's safety online?](#)

The tips below will help you to set rules for your child about accessing videos on the internet and their online behaviour, and support them to understand the risks and what to do if something happens.

- ⇒ Try to have your child in the same room as you when they are using the internet, and discourage them from using headphones
- ⇒ Chat to your child about what online videos might not be suitable for them to watch and share
- ⇒ Regularly check the history of videos they have watched online for anything inappropriate, or create a playlist for them
- ⇒ Encourage your child to tell you if they see something they find worrying or nasty
- ⇒ If your child wants to share a video they have recorded, check they get permission from anyone who features in it before they upload it
- ⇒ Tell your child not to give out any personal information or anything that can identify them, such as a school uniform or street name
- ⇒ Regularly check comments made on your child's videos. Talk to your child about how they could receive nasty or negative comments from other people, and what they should do if this happens
- ⇒ If another YouTube user posts a video of your child or shares personal information without consent, you can ask for this content to be removed by using YouTube's privacy complaint process

[Where else can I go for support?](#)

Policies, safety and reporting, YouTube: https://support.google.com/youtube/topic/2676378?hl=en&ref_topic=6151248

Privacy complaint process, YouTube: <https://support.google.com/youtube/answer/142443>

YouTube Kids parental guide, YouTube: <https://support.google.com/youtubekids/#topic=6130504> The National Society for the Prevention of Cruelty to Children (NSPCC) has a range of resources for parents on internet safety: <https://www.nspcc.org.uk/preventing-abuse/keeping-children-safe/online-safety/>

[Sources for this factsheet](#)

This factsheet was produced by Safeguarding Training Centre from The Key, in collaboration with National Online Safety: www.thekeysupport.com/safeguarding and <https://nationalonlinesafety.com/>

YouTube to restrict 'disturbing' children's videos, if flagged, BBC News, 10 November 2017
<http://www.bbc.co.uk/news/technology-41942306>

Eastlands Primary School

Bad weather—We are now into the time of year when bad weather can impact on school. If we have an emergency school closure or part day closure you will be informed through Rugby FM, our school website, on www.warwickshire.gov.uk/schoolclosure and by text message as soon as possible.

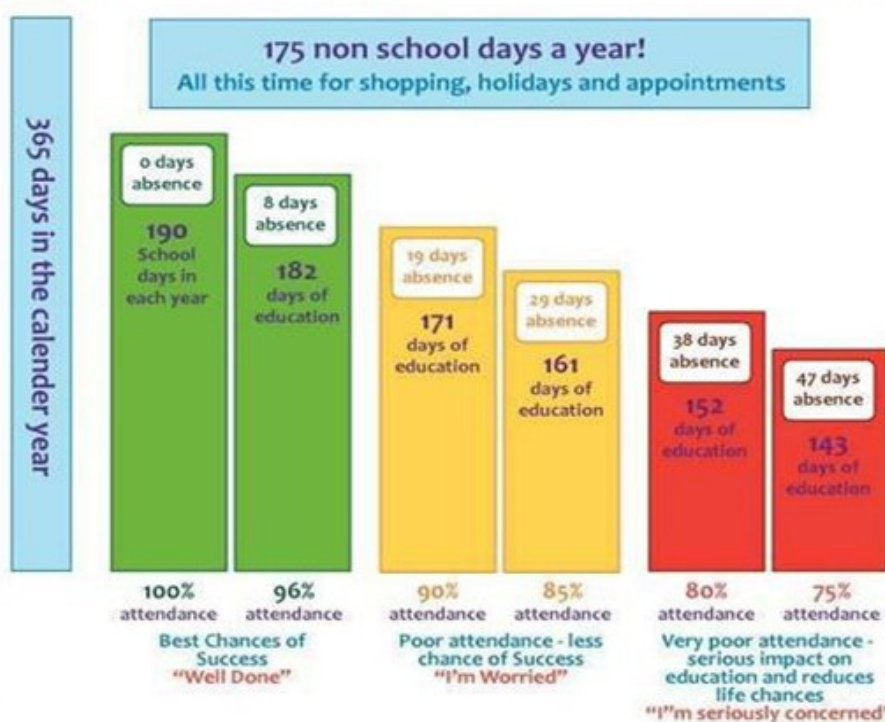
Our school attendance target is:-

96.5%

ATTENDANCE TARGET

Good Attendance Means...

being in school at least 96% of the time. This means 8 Days Off!



Computer Fun

This month's recommended website for children:-

KS1 [Story](http://www.storybee.co.uk)

[Bee](http://www.storybee.co.uk)

[http://](http://www.storybee.co.uk)



Always supervise your children when they are using the internet

KS2 – [Aaron Shepherd](http://www.aaron-shepherd.co.uk)

[http://](http://www.aaron-shepherd.co.uk)

Eastlands Primary School

LEAVE OF ABSENCE DURING TERM TIME 2016-2017 – INFORMATION FOR PARENTS

The Education (Pupil Registration) (England) (Amendment) Regulations 2013, govern all requests for leave within term-time. When considering such requests for a leave of absence, the school are obliged to act within the law.

The amended regulations removed references to 'holiday' and 'extended leave', as well as the statutory threshold of 10 school days. It is now clear that Head Teachers may not grant any leave of absence during term time unless there are exceptional circumstances relating to the application. If the leave is granted, head teachers are able to determine the number of school days a child can be absent for.

The Government has not defined 'exceptional circumstances' as referred to in the 2013 regulations. It is for the Head Teacher to decide what he/she views as 'exceptional' and it is at their discretion if the circumstances warrant the leave to be granted.

The school can only consider Leave of Absence requests which are made by the 'resident' parent.

Each application for a leave of absence will be considered on a case by case basis and on its own merits.

Where applications for leave of absence are made in advance and refused, the child will be required to be in school on the dates set out in the application. If the child is absent during that period, it will be recorded as an unauthorised absence, which may result in legal action being taken against the parent(s), by way of a Fixed Penalty Notice.

Failure to make an application for leave in advance can also result in a Fixed Penalty Notice being issued to the parent(s).

All matters of unauthorised absence relating to a Leave of Absence will be referred to the Attendance, Compliance and Enforcement Service of Warwickshire County Council

It is important to note, Fixed Penalty Notices are issued to each parent of each absent child, (for example 2 children and 2 parents, means each parent will receive 2 invoices in the amount of £120 each, totalling £240 for both children, this is reduced to £60 per child if paid within 21 days).

Where a Fixed Penalty Notice is not paid within the required timeframe as set out on the notice, the matter will be referred to Warwickshire County Council's Legal Services to consider instigating criminal proceedings under S444 Education Act 1996.

Fixed Penalty Notices are issued in accordance with Warwickshire County Council's Code of Conduct for Penalty Notices.

Warwickshire Primary School pupils recorded 47,552 half day sessions of absence due to holiday in the academic year 2014/15. This is a decrease of 13,122 on the previous year. This is a positive outcome as it means that 6,561 extra days of education were achieved when compared with the previous academic year.

We greatly appreciate parental support to reduce the total amount of days lost due to holidays. We are committed to working in partnership with you to enable your child to reach their academic targets and to support their social development. For this to happen we need to keep individual attendance as high as possible - we all need to play our part.

Your child's progress academically as well as socially is our shared priority